

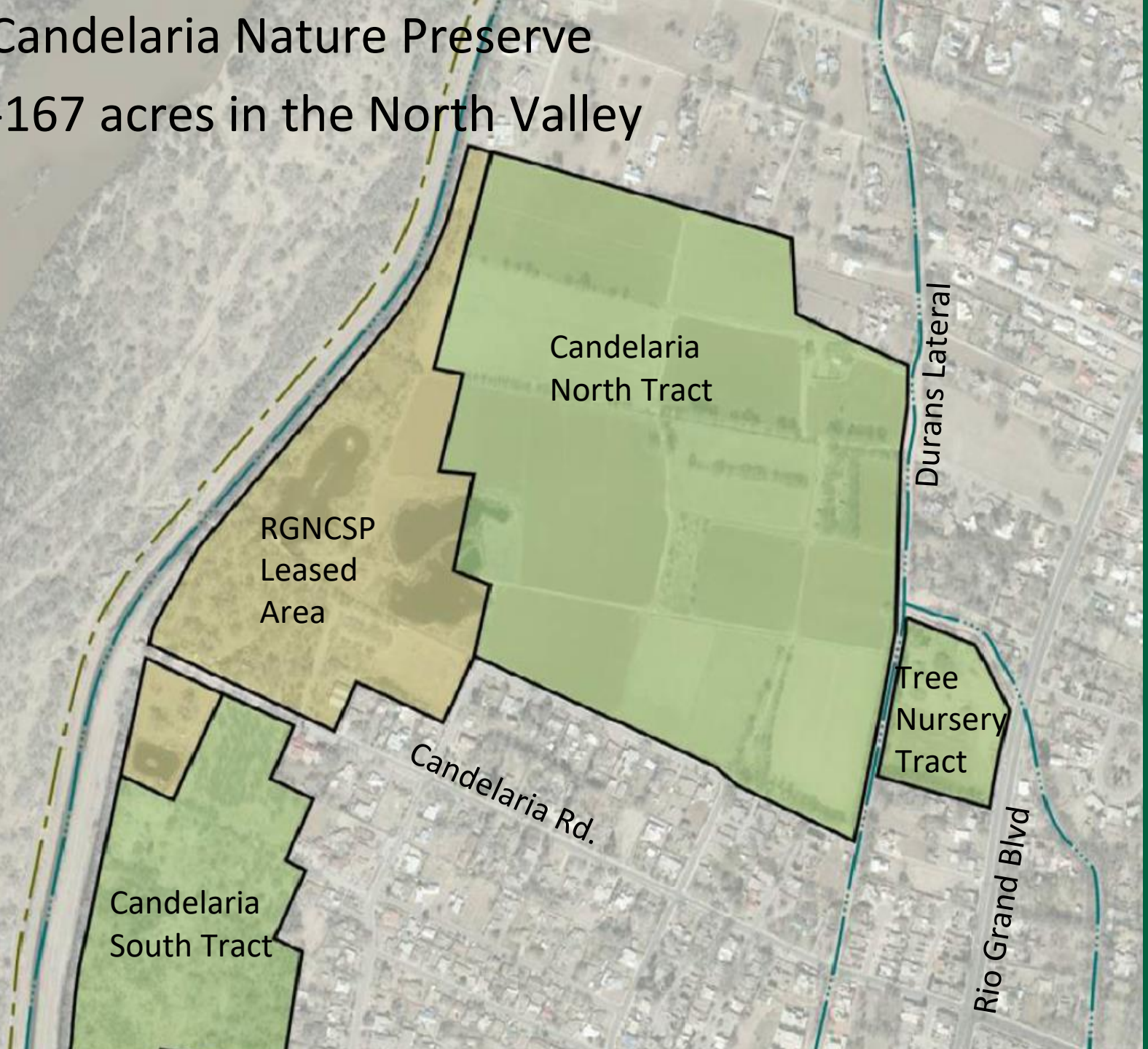
Candelaria Nature Preserve Annual Presentation



**ONE
ALBUQUE
RQUE** parks &
recreation

Candelaria Nature Preserve

-167 acres in the North Valley



Candelaria
North Tract

RGNCSP
Leased
Area

Candelaria
South Tract

Tree
Nursery
Tract

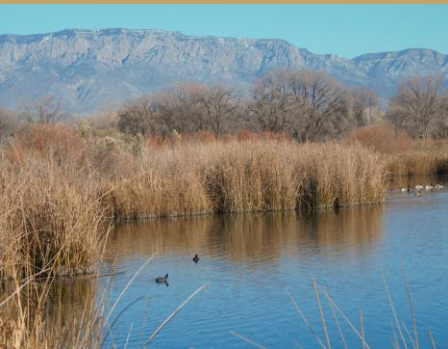
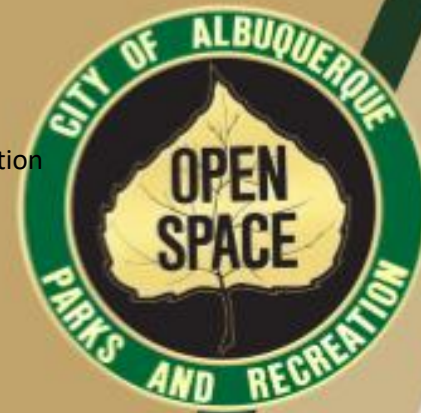
Candelaria Rd.

Durans Lateral

Rio Grand Blvd

2023 Accomplishments

- Initiated active restoration on 7 acres, continued restoration maintenance on 12 acres, conservation fallow on 21 acres, and wildlife farming on 43 acres
- Completed construction the west and east wildlife viewing platforms
- TNT: contractor completed construction drawings
- CST: wildlife monitoring
- ENMRD State Parks approved the Resource Management Plan
- Friends of Candelaria
 - 105 members & 850 hrs. worked
 - Lead public tours, Monthly Tours
 - Leading CNP Interpretive Plan
- Youth conservation and volunteer involvement
 - Ancestral Lands Conservation Corps assisted in elm removal and care of 2B basins
 - Rocky Mountain Youth Core engaged in planting and weed removal in 1A over a two week period
 - RiverXchange hosted three groups of students helped plant native species in 4A
 - Cottonwood Gulch students participated in weed removal, mulching, planting, and watering throughout the property over seven days
 - Bosque Adventure PreK help broadcast native seed by hand in 4C
- Ciudad Soil and Water Conservation District was awarded \$74,000 in funds from NM Healthy Soil Program (HSP) towards CNT restoration. They also submitted a LWCF Grant for \$788,000 (will require a 50% Match)
- Continued engagement with Habitat Council
 - Hosted property tour of the Endangered Species Collaborative in August



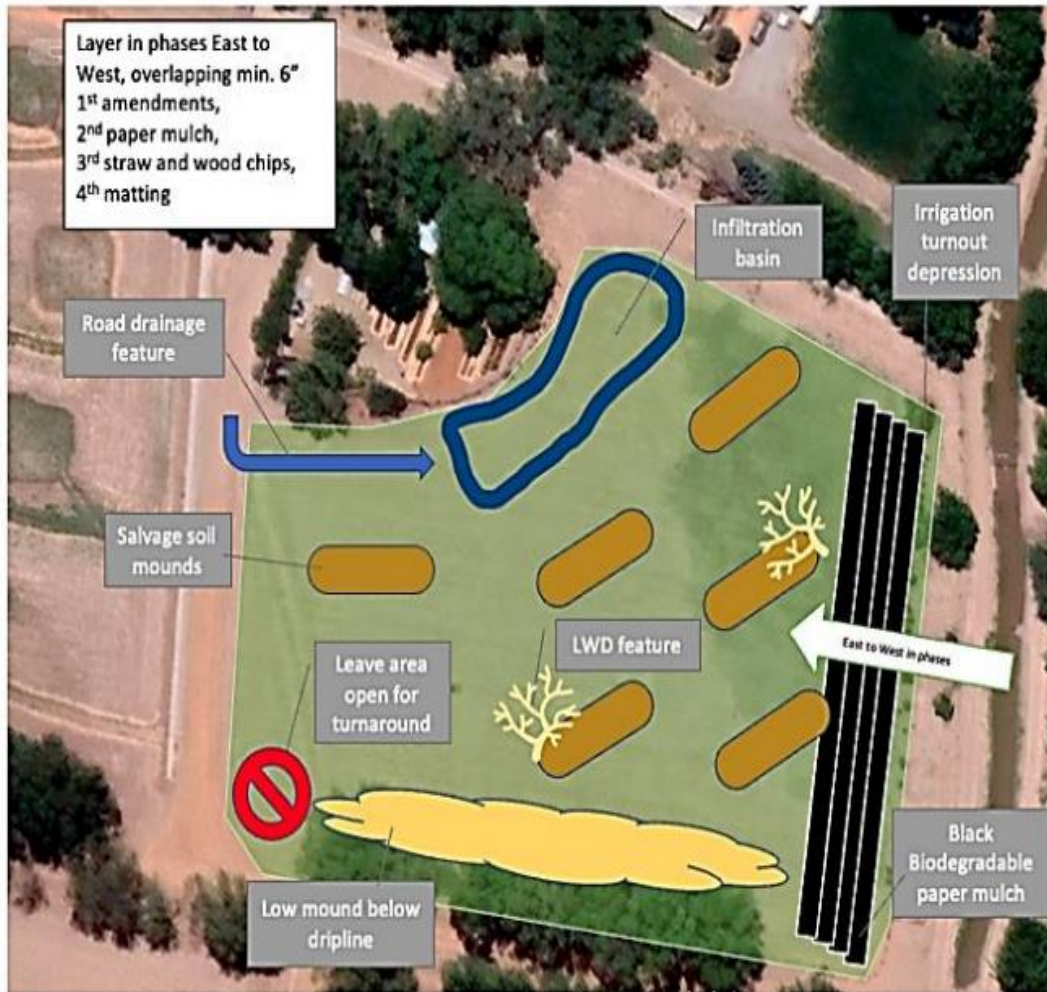
CNT: Wildlife Farming Activities



- Methods employed are no-till drill
- Increasing diversity in cover crops and native species seeded
- Continued seeding of native grass with straw soil enhancement in 3B funded by HSP
- Wildlife crops planted in 1E, 1D, 2D, and 4D included winter wheat, oats, triticale, barley, and native pollinator species
- Hedgerows along 1B were supplemented with species such as New Mexico olive, false indigo bush, and 3-leaf sumac



Field 1A Design and Feature Detail



- Continued plan implementation on field 1A including
- sheet mulching to improve soil microbial diversity
 - soil amendments
 - planting native species in fields and along hedgerows

CNT: Field 4A Design and Implementation



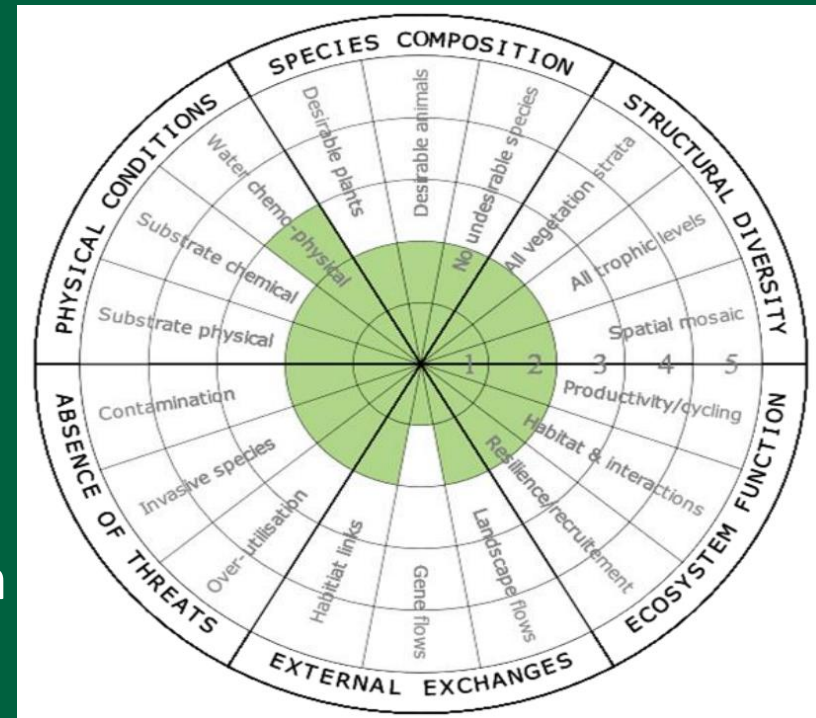


RiverXchange planted

- New Mexico Olive
 - Chamisa
 - Baccharis
 - Wolfberry
- Four-wing saltbrush

CNT: Ecological Monitoring

- Ecological models in process to better anticipate and plan outcomes
 - SER recovery wheel utilized
- Evaluation of plant mortality into 2023
- Exotic species presence, “hotspots”
- Monitoring ongoing for soil changes (Lab tests, compaction, aggregate stability, soil cover)
- Photos and documentation ongoing of processes, lessons learned
- Observations inform models and crop/restoration planning and design
- Fields 1A, 1B, 1C, 1E, 3B, 4A, and 4C by RGR in December
- Overall assessment results shown on graph



CNT: Ecological Monitoring

Wildlife planted sunflowers



Nets for bird banding



CNT: Wildlife Monitoring

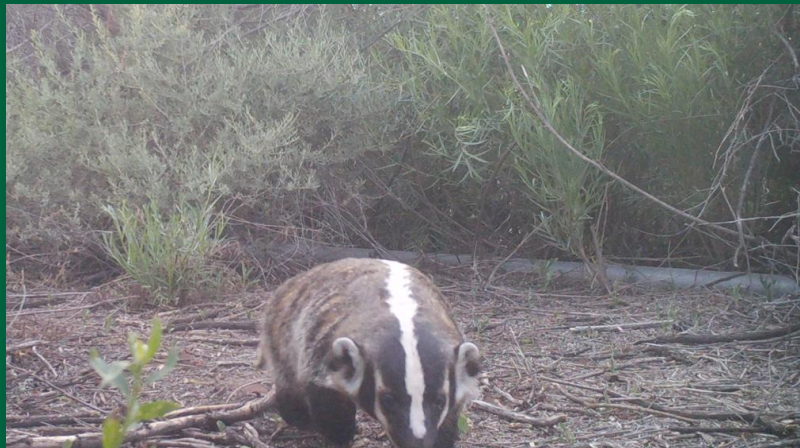
Photo Points and Wildlife Cameras

Eleven photo points throughout the CNT looking over each farm field plot. Monitoring happening on an seasonal basis during the year. Seven wildlife cameras are currently installed throughout the property to better monitor the wildlife on the property and the corridors they use. This will allow us to better enhance the preserve and decrease any fragmentation occurring to wildlife mobility.

Avian Survey

Bird surveys will be conducted by a crew of volunteers from the RGNC. They monitor species and counts on the Candelaria Wetlands into the CNT. Data was initially entered into eBird but has transitioned to formal field-specific data sheets and excel database to inform crop management.

CNT: Wildlife Monitoring



IPM Planning

Due to change in staff, the IPM is currently in the process of being completed but expected in the Spring of 2024

- Invasive removal has consisted of mechanical, manual and drought methods
- No chemical treatment has been used in the absence of a directive document
- Current species of concern include Johnson grass, Kochia, Tumbleweed, and Bindweed.



East and West Wildlife Viewing Areas

East Wildlife Viewing Platform



West Wildlife Viewing Platform



Ribbon cutting in October 2023

- Both Viewing Platforms open to the public
- Access from adjacent trails- Duranes Lateral and Paseo del Bosque

Tree Nursery Tract

Refined Concept

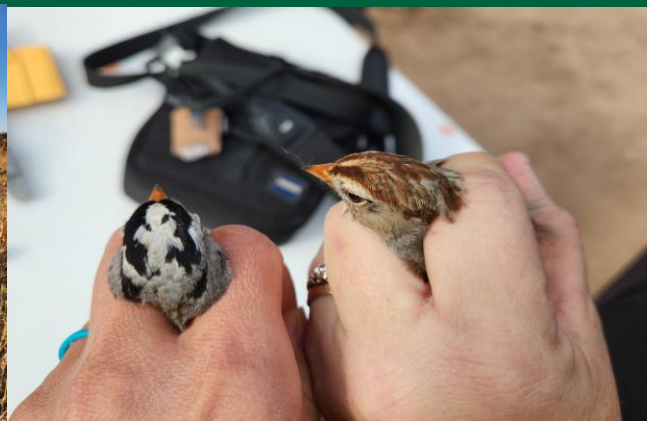
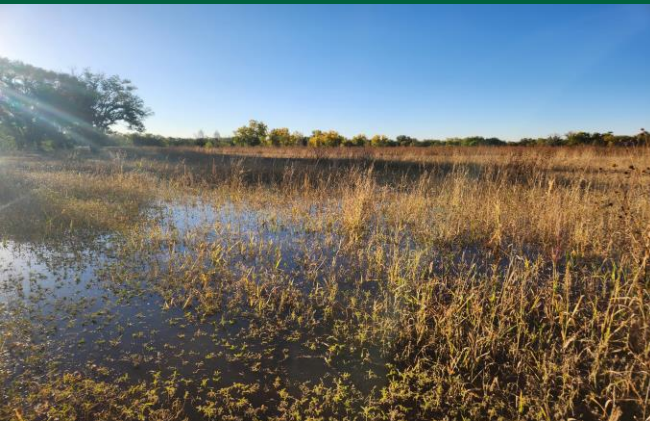


Construction plans completed. Working on phased construction with limited funding. Priority will include irrigation and basic infrastructure.

Year 2 to 3 Activities



- Contract
 - Ciudad Soil and Water Conservation District
 - Rio Grande Return; Ancestral Lands Conservation
- Monitoring
 - Bird surveys, bird banding, bird nest monitoring, vegetation surveys, community science events
- Education
 - Wing in the New Year, Learn to Bird Watch, Learn to Photograph Wildlife, Outdoor Field School, Family Nature Club, City Nature Challenge, Urban Bird Coalition
- Friends of Candelaria joined with the Open Space Alliance



Questions, Comments, and Recognition



<https://www.cabq.gov/candelaria-nature-preserve>