



ONE
ALB
UQU
ER
MQU

Week-by-Week Comparison of Gating Criteria

14 Day Average

ABQ (Bernalillo County)	Official DOH Status as of 03/22/21	Official DOH Status as of 04/05/21	Unofficial Status* as of 04/12/21	Criteria to Move to Green (both)
Positive Cases per 100,000	9.8 cases	9.4 cases	10.8 cases	8 cases
Test Positivity Rate	2.38%	2.43%	2.3%	5% or less

*Data from COA ENH Department

City by City Comparison

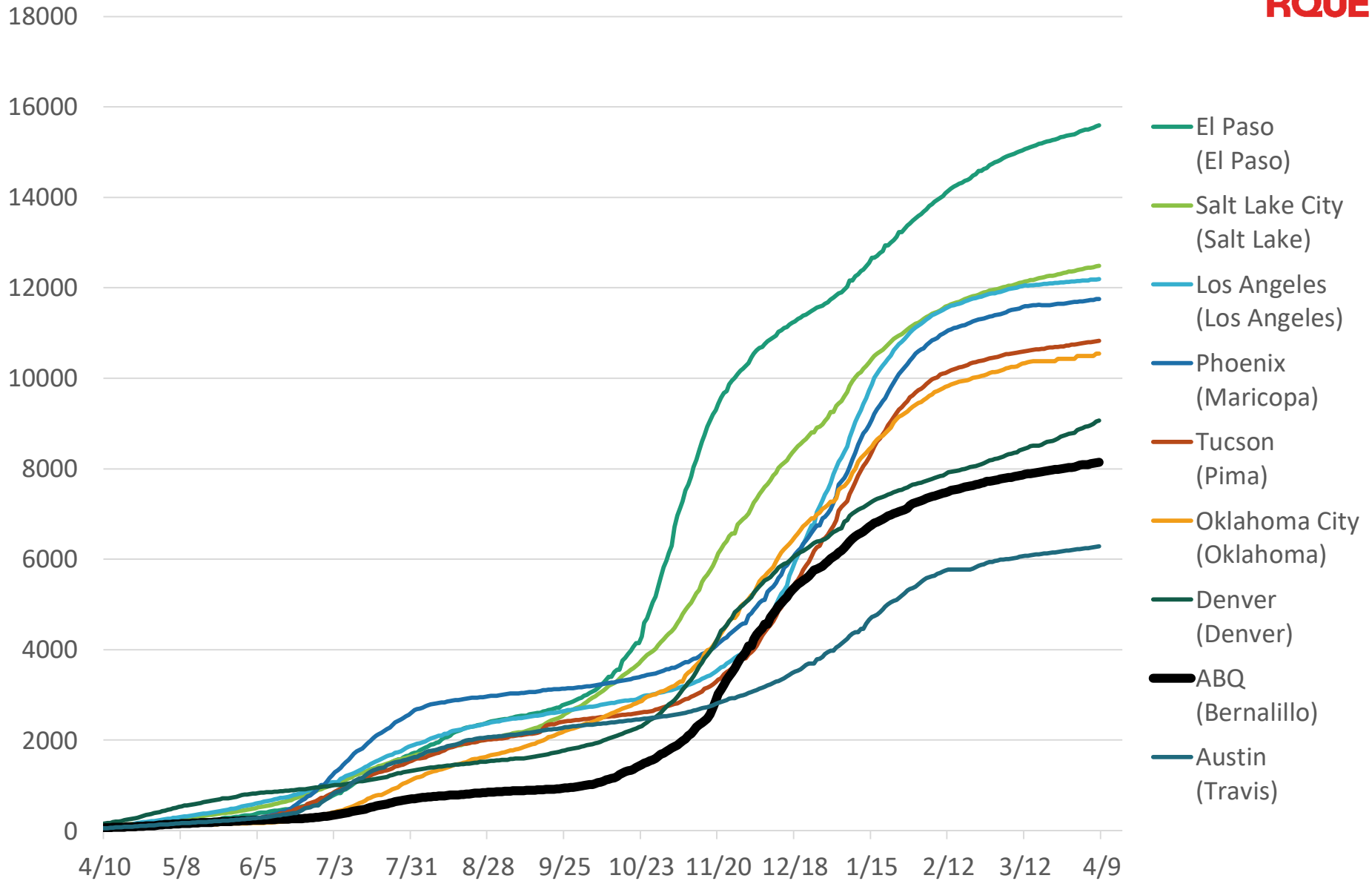
	ABQ (Bernalillo County)	Denver (Denver)	Tucson (Pima)	Austin (Travis)	Los Angeles (Los Angeles)	Phoenix (Maricopa)	Salt Lake City (Salt Lake)	El Paso (El Paso)	Oklahoma City (Oklahoma)
Total county population	677,692	693,417	1,109,722	1,273,954	10,098,052	4,253,913	1,120,805	837,654	655,057
Confirmed COVID-19 cases to date (per 100k)	8,142	9,067	10,826	6,282	12,191	11,754	12,484	15,595	10,543
% of new tests positive (7-day Avg)	2.3%	4.1%	2.8%	4.7%	1.6%	4.3%	3.8%	10.4%	5.8%
Individuals with at least one dose* (per 100k)	38,741	38,887**	32,197	10,237	30,588	22,302	38,887	36,628	38,494

Source: CDC & Johns Hopkins, 7 Day total

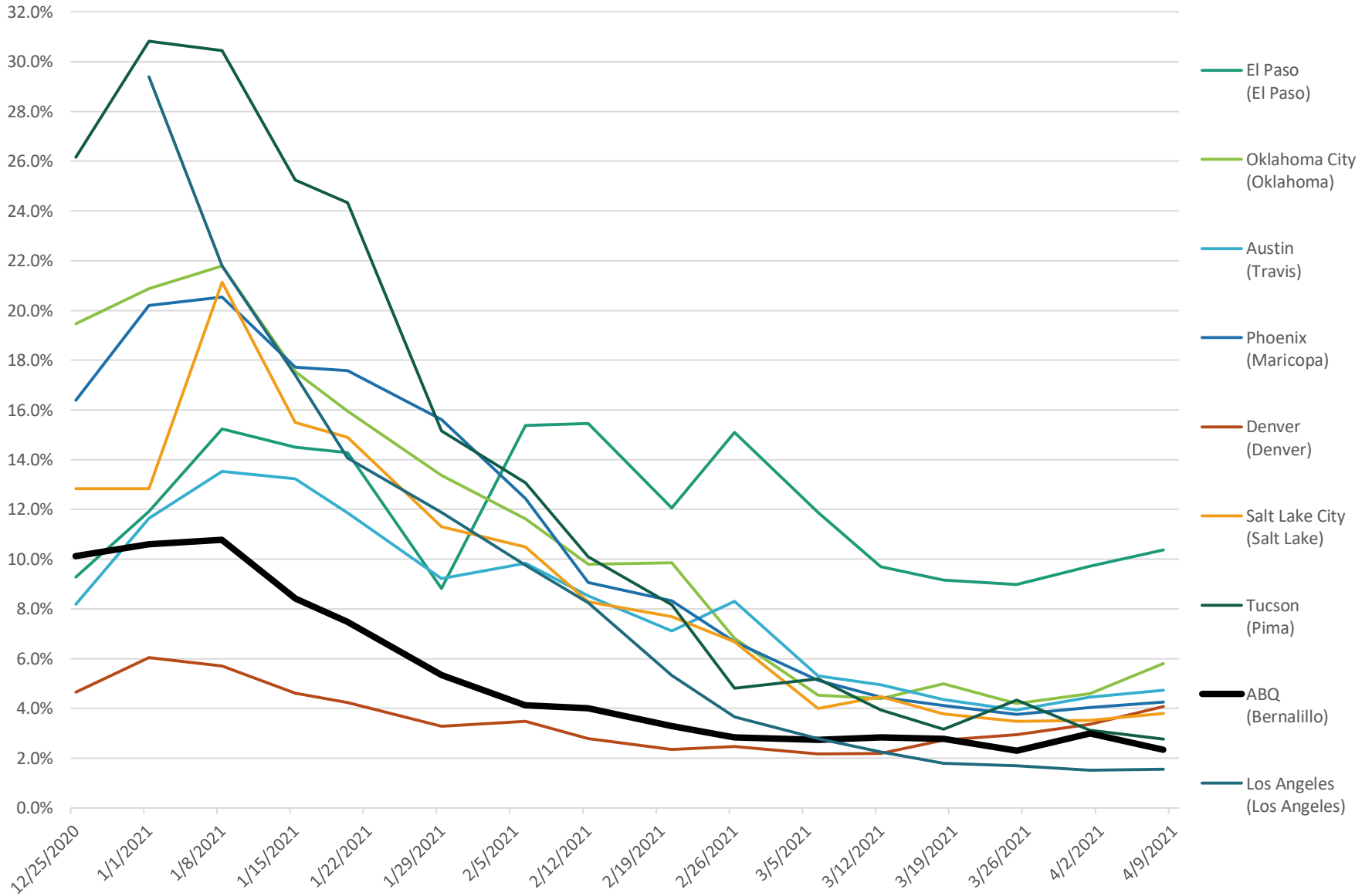
*Data from most recent county report within last 30 days **Estimate

Data collected April 12, 2021

Cumulative Confirmed per 100k



Percent of Positive Tests



Vaccine Distribution

As of 4/12/21

	% Residents over 16 Partially Vaccinated	% Residents over 16 Fully Vaccinated
ABQ (Bernalillo County)*	47.6%	28.4%
New Mexico*	52.7%	34.6%
United States**	46.5%***	28.6%***

*Data from NM DOH

**Data from CDC

***Over 18

**ONE
ALBUQUERQUE**



ONE
ALB
UQU
ER
MQU