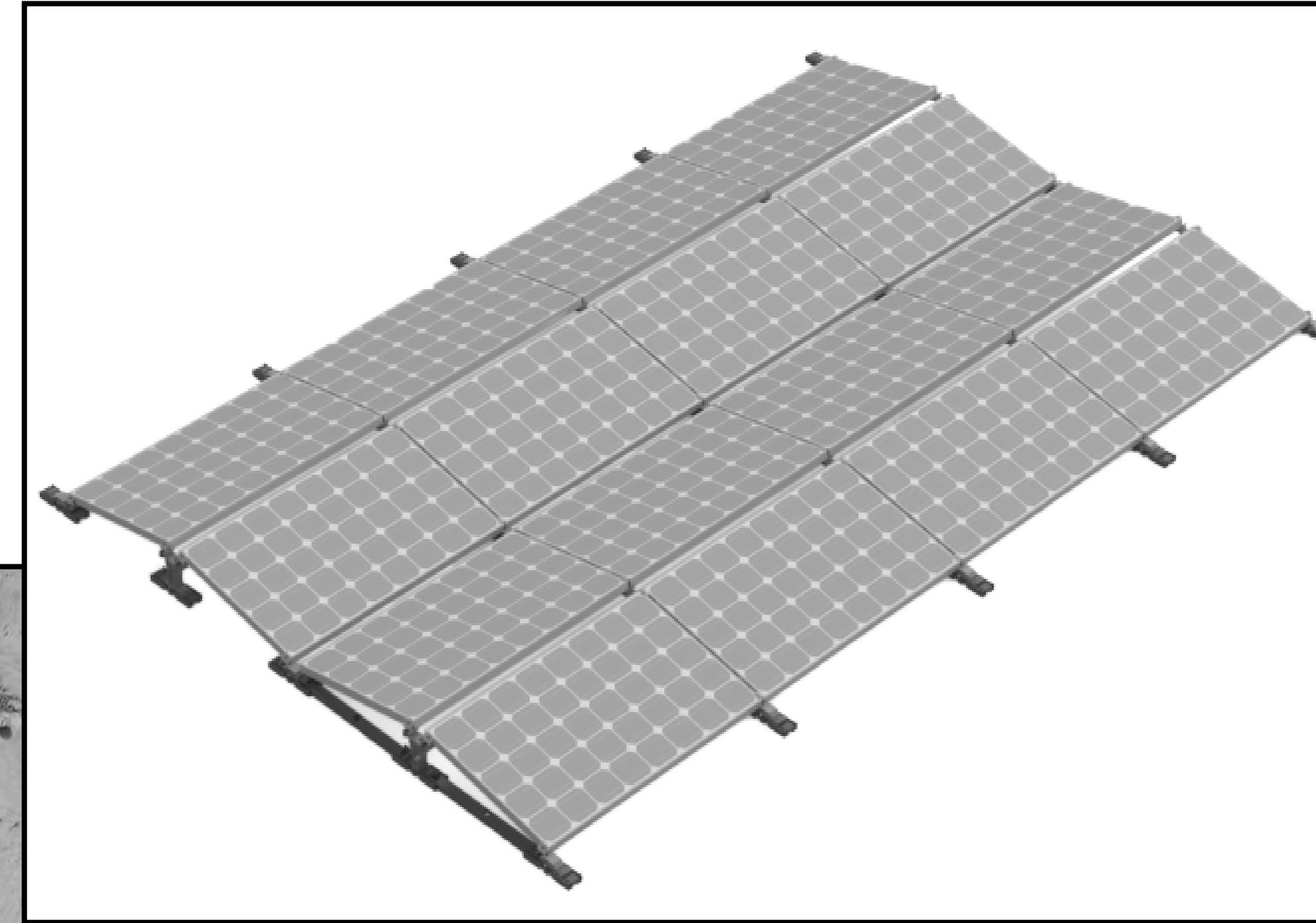


# ABQ RFP – Fire Station #2 Site Plan and Elevations



## Preliminary Site Plan

Fire Station #2  
2401 Alumni Dr SE  
Albuquerque, NM

Contact: Kamil Pianka  
[K.pianka@intelligen.energy](mailto:K.pianka@intelligen.energy)  
508-677-1899

Scale: NA

Notes: Preliminary design only. All locations subject to city approval, permitting requirements, and complete engineering.

Array #1,2 are tilting toward East/West alternating columns.

**Equipment Schedule:**

Panels: SLA-X 295 BiFacial (60 Cell) (158)

Racking: Everest D Dome R2

Inverters: SolarEdge 3 Phase 14.4 kW (3)

Optimizers: SolarEdge P8 Series (79)

46.6 kW DC / 43.2 kW AC  
E/W Rooftop Style Array  
No ESS