

**ONE**  
**ALBUQUE**  
**RQUE**

**environmental  
health**

# Overburdened Areas Map: Version 1.0



Public Consultation Series

PRESENTATION: Tybur Casuse-Driovínto, María Gallegos





# How We got here

- Nov 2022 Community led petition submitted to Albuquerque-Bernalillo County Air Quality Control Board (AQCB)
- Dec 2023 AQCB adopted the *Health, Environment, and Equity Impacts rule*
- Aug -Sep 2024 First public consultations on the development of an overburdened areas map of Bernalillo county-  
“Overburdened Areas Map 0.1”
- Oct 2024 Communicate and Publish updated map



# Where are We headed

- Oct-Nov 2024 Second phase of public consultations
- Dec 2024 Publish “Overburdened Areas Map”
- Jan-Jul 2025 The department may make minor adjustments to correct errors and for other significant concerns based on public input

# Before Public Consultation on OBA Map

Developed a map to identify the top 20% cumulatively impacted block groups of Bernalillo County using a method developed by other statewide cumulative impacts maps (i.e. CalEnviroScreen<sup>1</sup>)

## Environmental Factors

- Particulate Matter (PM 2.5)
- Ozone
- Diesel Particulate Matter
- Traffic Proximity
- Toxics Release to the Air

## Health Indicators

- Adult Asthma
- COPD
- Heart Disease
- Persons with Disabilities
- Life Expectancy
- Cancer

## Social Determinants of Health

- Non-Highschool Attainment
- Low Income (<200% Poverty level)
- Percent Limited English Proficiency
- Percent non-white residents

<sup>1</sup>[Zeise L, Blumenfeld J \(2021\) CalEnviroScreen 4.0](#)



# Initial Public Consultation Session



EHD received 72 written in-person suggestions and comments as well as 6 documents or emails

These are accessible on the [EHD Website dropbox](#)

Of the datasets suggested these four were able to be readily incorporated because they were already in EJ Screen and CDC PLACES

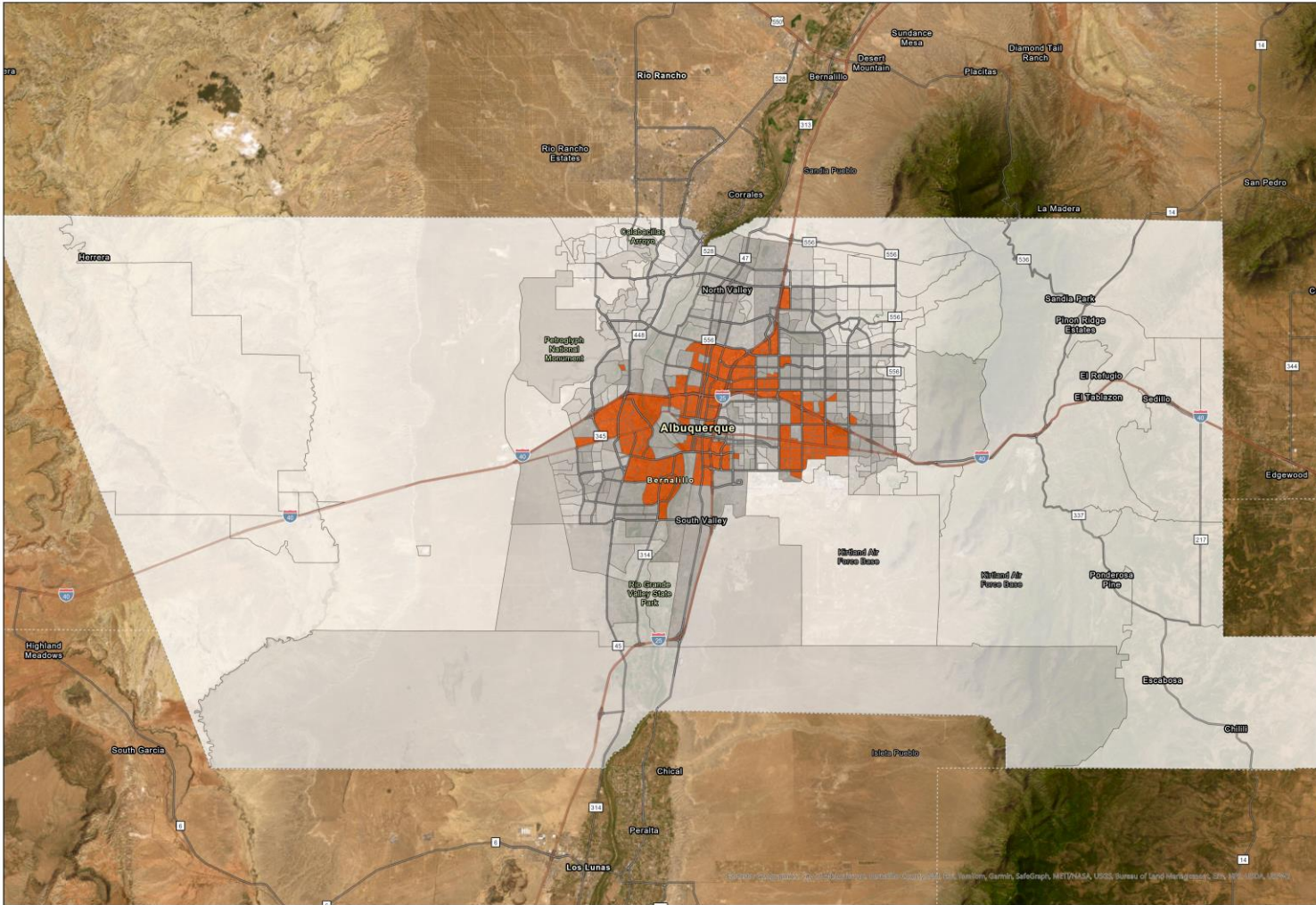
This will be an iterative process and other suggested datasets can be developed over time, but we need to analyze them for inclusion (i.e. data quality, impacts to top 20% OBA)

1. Superfund Site Proximity
2. Wastewater Discharge
3. Diabetes Prevalence
4. NO<sub>2</sub>

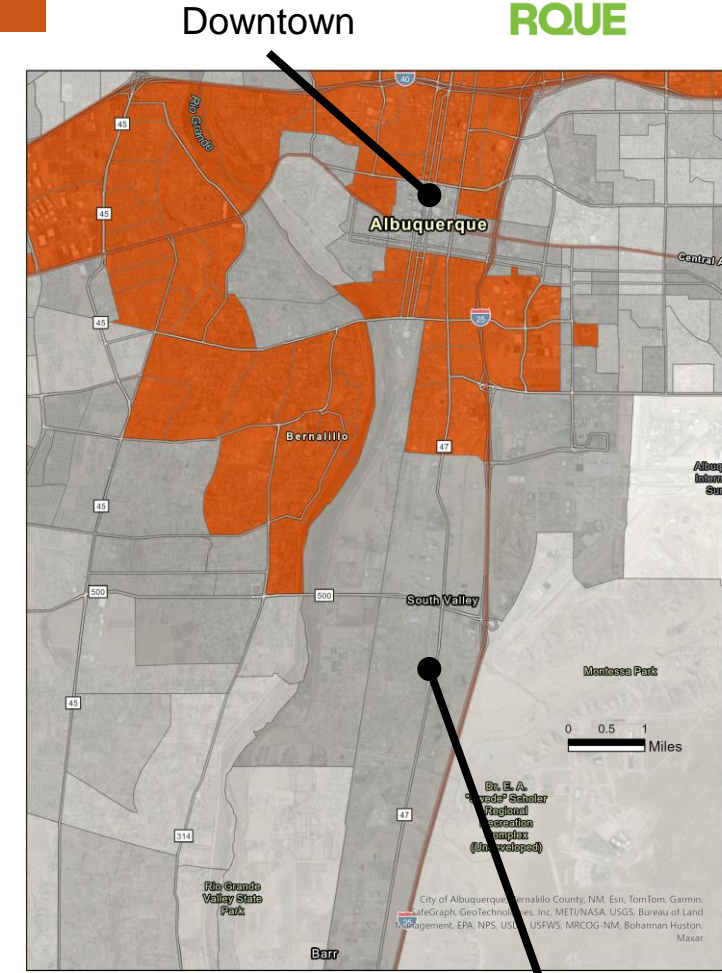
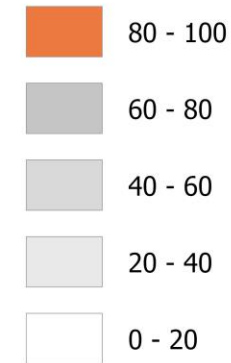


# Before 1<sup>st</sup> Public Consultations on OBA Map

Orange indicates Overburdened Area which will be subject to additional Air Quality Permitting Processes



OBA HEEI Percentile

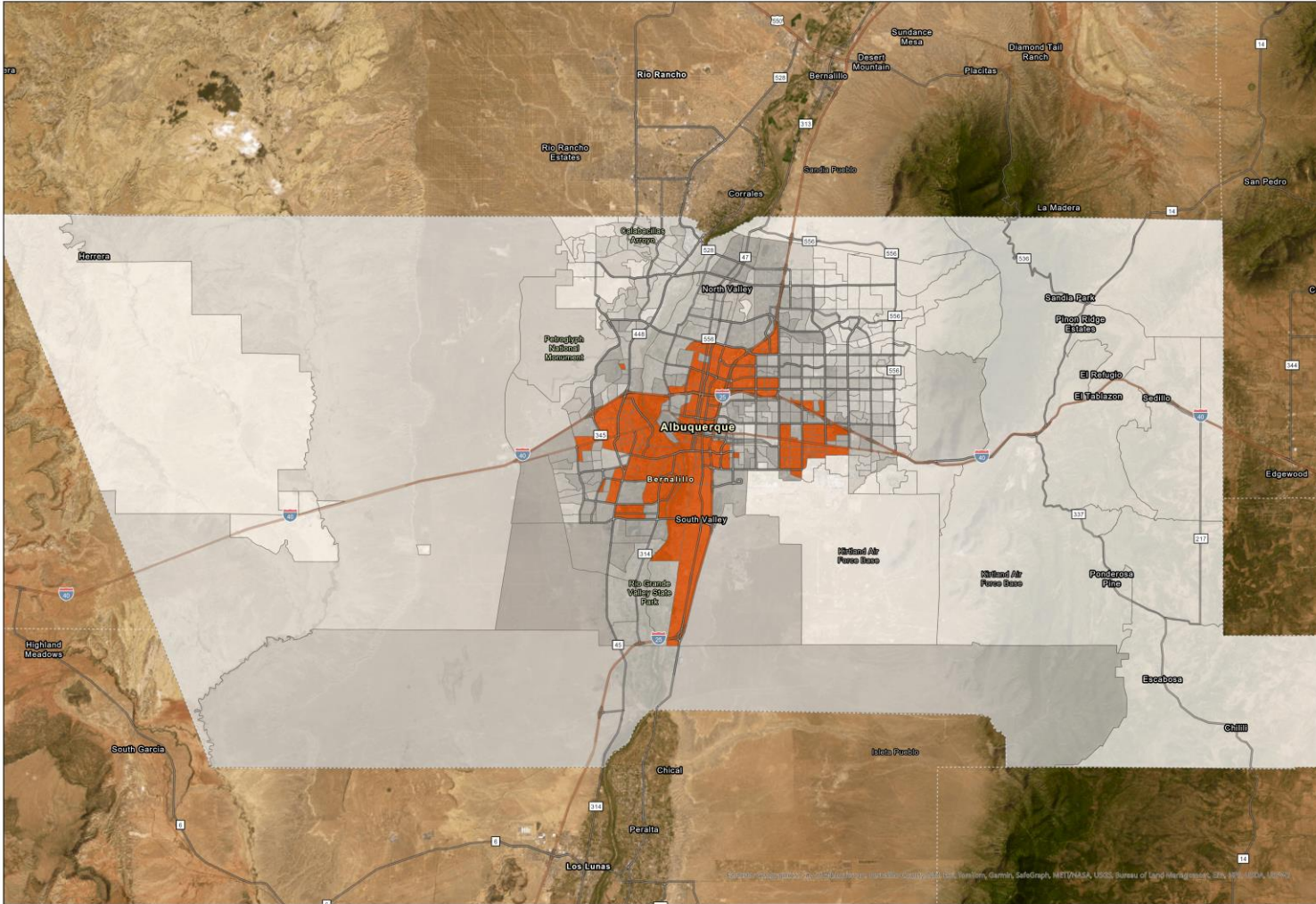


Mountainview

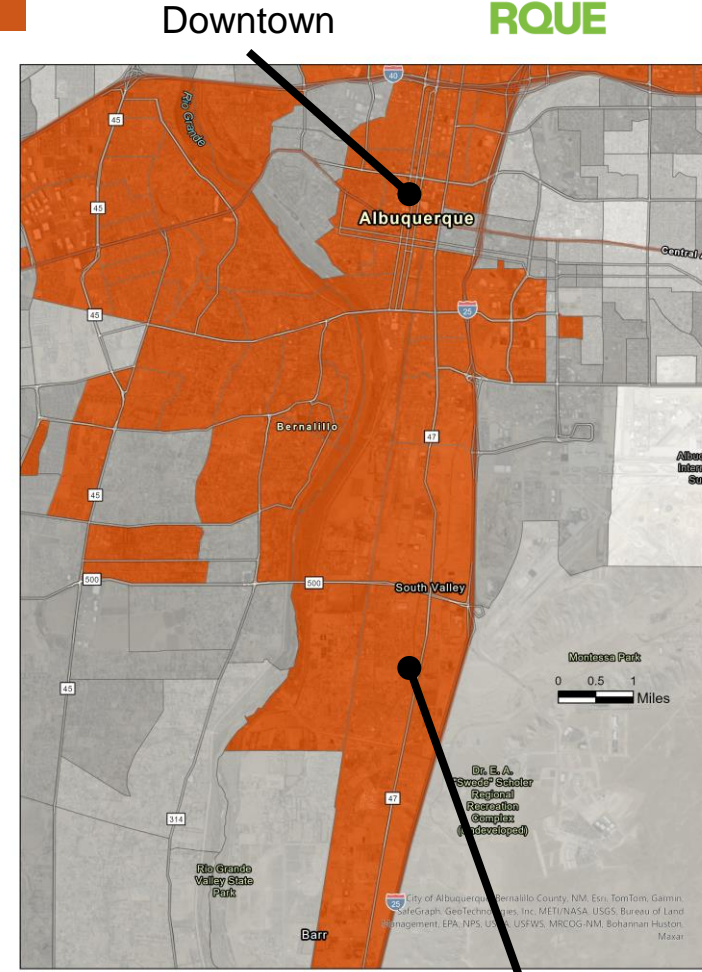
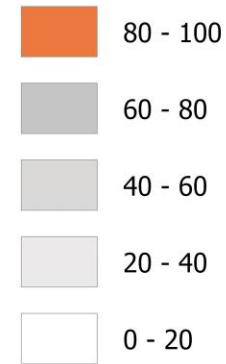


# After 1<sup>st</sup> Public Consultations on OBA Map

Orange indicates Overburdened Area which will be subject to additional Air Quality Permitting Processes



V1.0 OBA Score Percentile

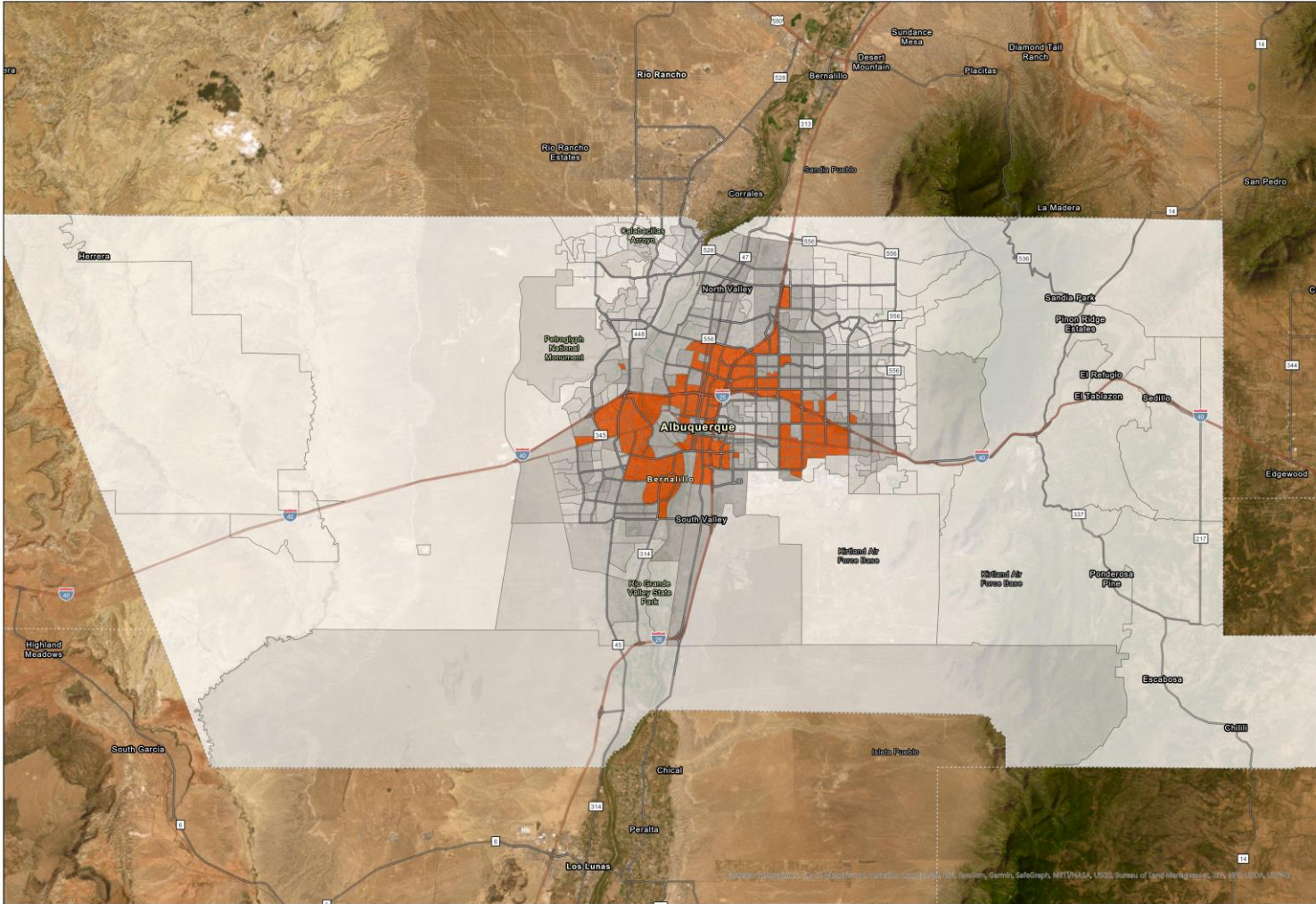


Mountainview

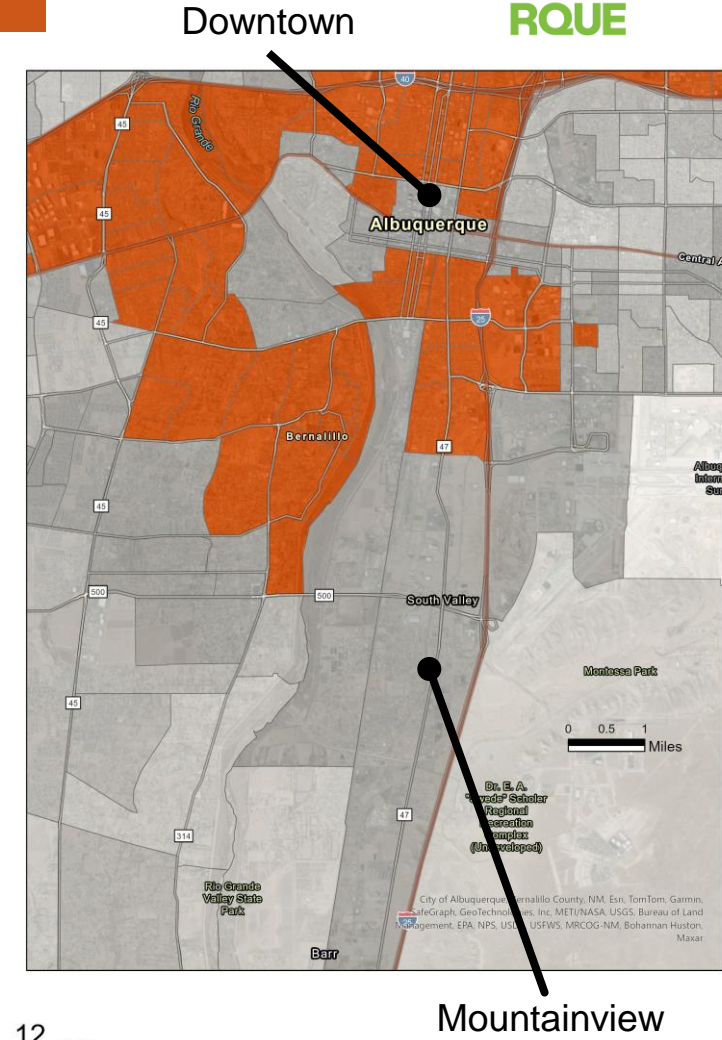
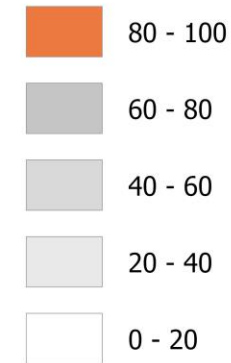


# Before 1st Public Consultations on OBA Map

Orange indicates Overburdened Area which will be subject to additional Air Quality Permitting Processes



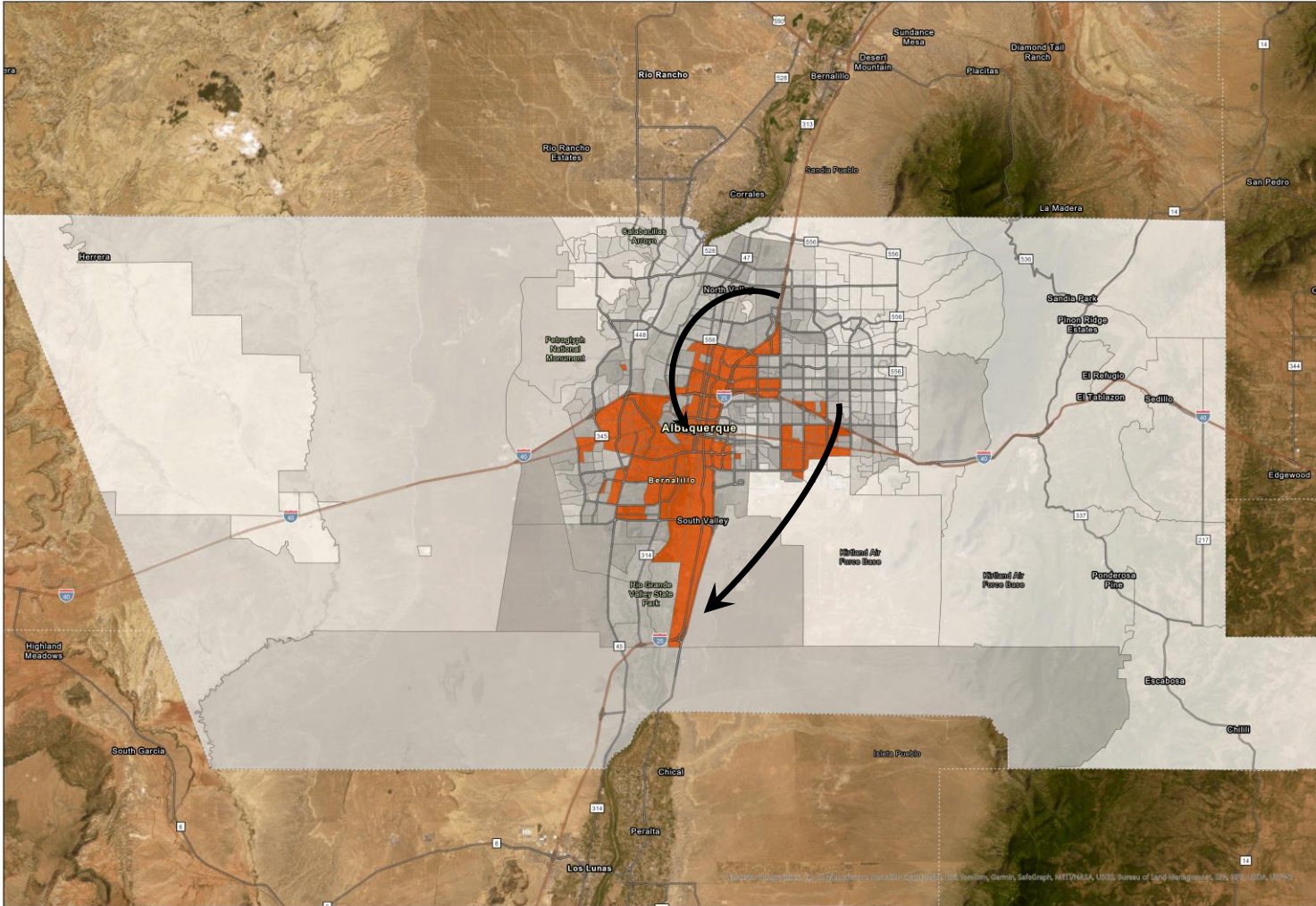
OBA HEI Percentile



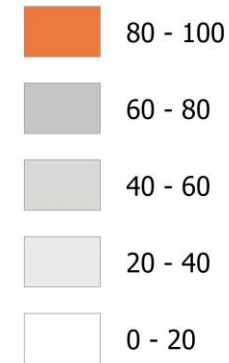


# After 1<sup>st</sup> Public Consultations on OBA Map

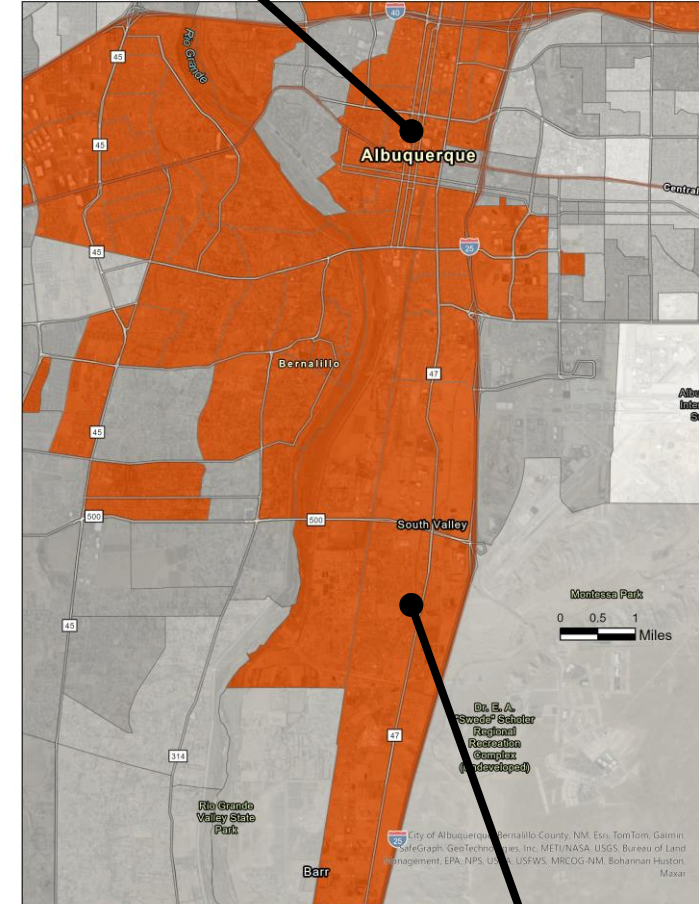
Orange indicates Overburdened Area which will be subject to additional Air Quality Permitting Processes



V1.0 OBA Score Percentile



Downtown



Mountainview

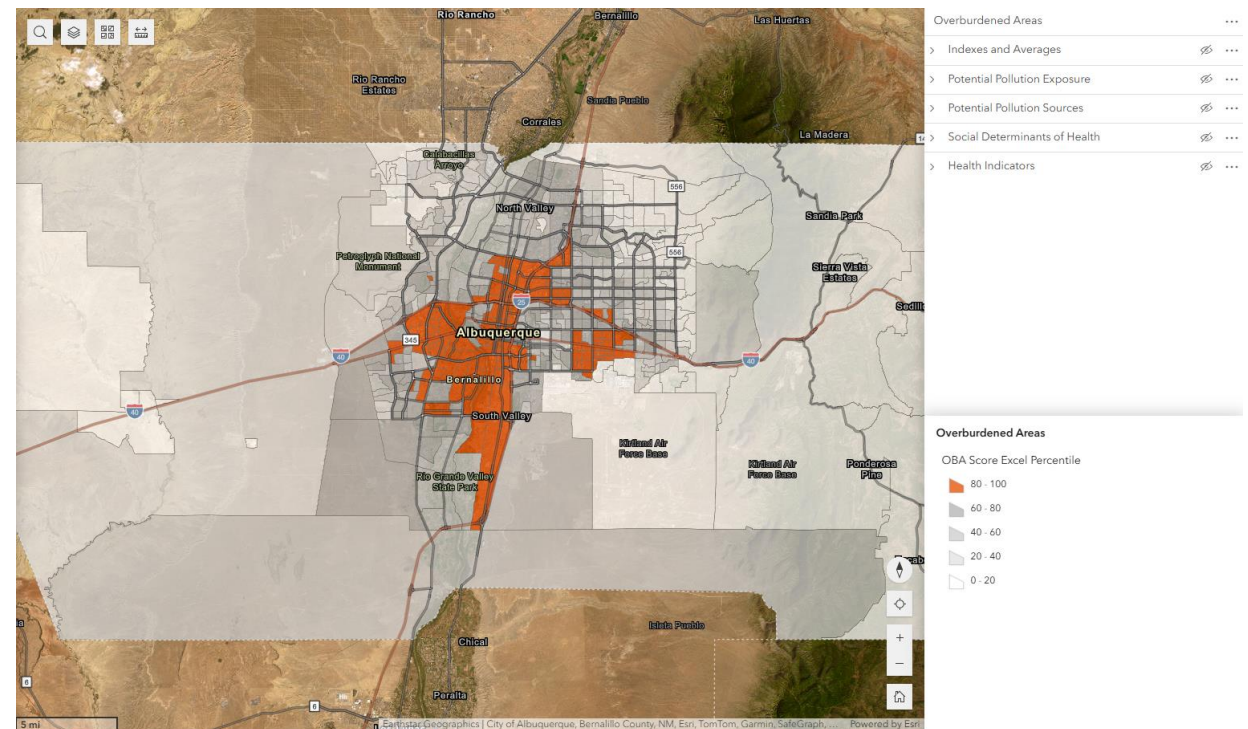
# Overburdened Areas Map Dashboard

Stakeholders asked to see each layer

Stakeholders should be able to identify why their area is, or is not, being identified as overburdened according to the HEEI rule

I will share a short demonstration of:

- Searching an address for proximity to an OBA
- Identifying a 1 mile area around an OBA
- Investigating underlying data impacting OBA identification







# Limitations and Considerations

1. The Overburdened Area map will provide additional air quality permitting requirements for stationary sources in or within 1 mile of an overburdened area
2. Percentiles are a comparative unit which allows for index calculations and not directly representative of exposure, risk, or prevalence
3. Based on stakeholder feedback and resources EHD may make revisions to the map

Examples of purpose and use statements

- [Connecticut EJ](#)
- [New Jersey EJMAP](#)
- [EJ Screen 2.3](#)





# Conclusions

- We were able to include **four** factors based on public consultation which changed the areas identified as in the top 20% cumulatively impacted block groups
- We made the Overburdened Areas map easier to interpret
- We built a webtool for stakeholders to assess the underlying data and identify areas considered as Overburdened Areas
- We will continue to collect and document comments and suggestions throughout the 2<sup>nd</sup> phase of public consultations



# Next Steps

- Oct-Nov 2024 Second phase of public consultations on development of an overburdened areas map of Bernalillo County
- Dec 2024 Publish “Overburdened Areas Map”
- Jan-Jul 2025 The department may make minor adjustments to correct errors and for other significant concerns based on public input

# Thank You!



## Schedule and Online Engagement

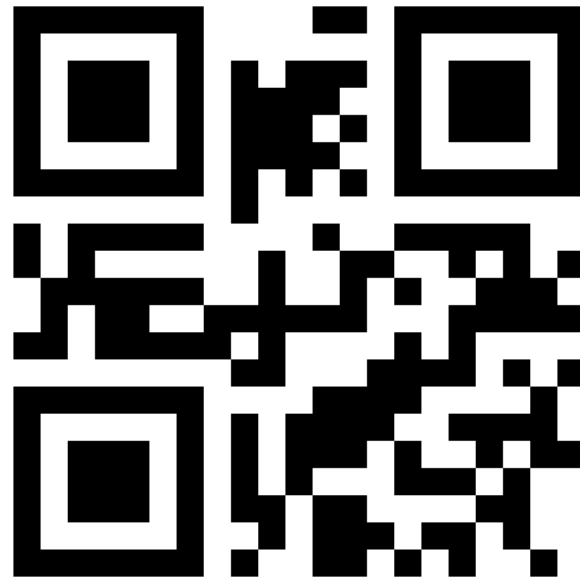
### Ways to Engage

Attend In Person Sessions!

Email:

[OBAmap@cabq.gov](mailto:OBAmap@cabq.gov)

[Website Engagement Applications](#)



**Tybur Casuse-Driovinto, PhD**  
Environmental Health Specialist II

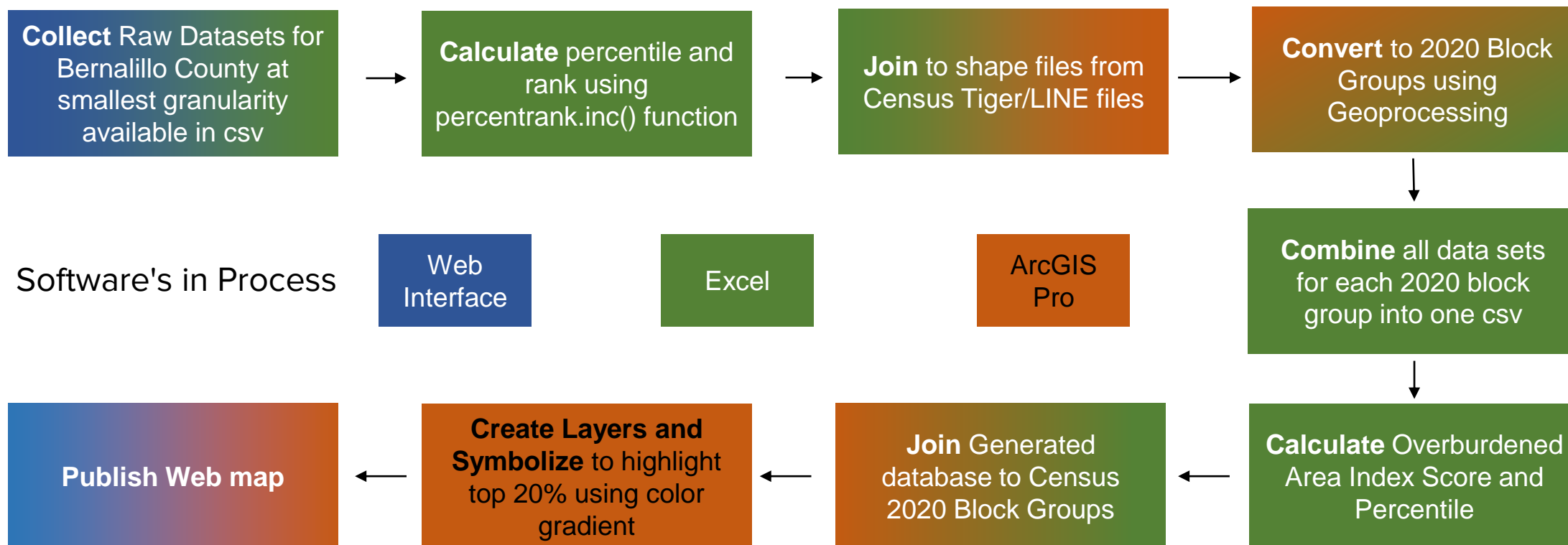


**María Gallegos**  
Public Health Compliance Manager

[www.cabq.gov/HEEI](http://www.cabq.gov/HEEI)

# Context Slide: Overview of Methods

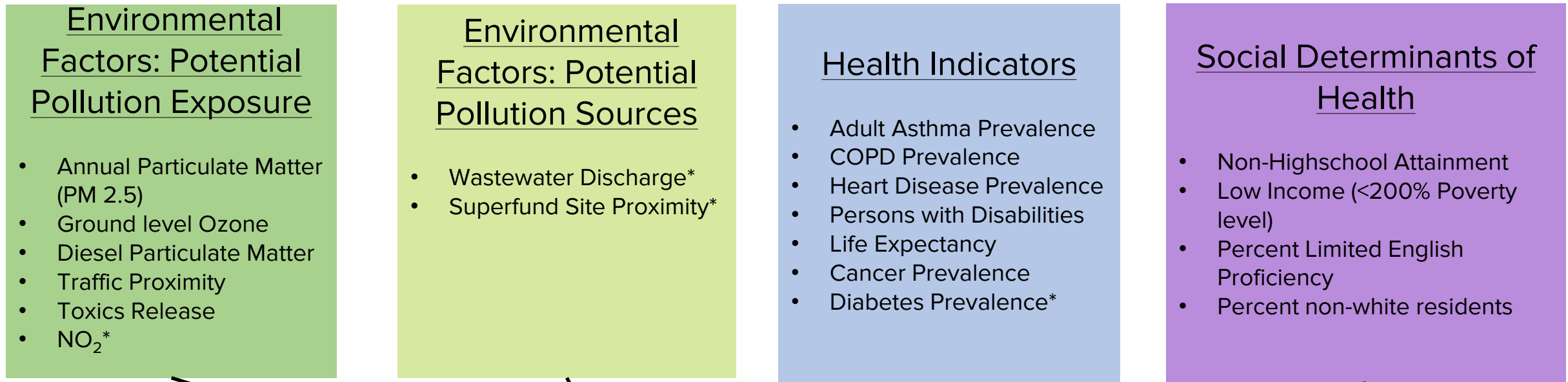
Outline of 9 steps covered today





# Context Slide: Calculation of OBA Score

Included in current Version based on HEEI starting point and first public consultations



$$\frac{\text{Average}(PPE) + 0.5 * \text{Average}(PPS)}{1.5} * \frac{\text{Average}(HI) + \text{Average}(SDoH)}{2} = \text{Overburdened Area Score}$$