

NORTHWEST MESA WINDOWS PROJECT



November 16, 2021

ALBUQUERQUE CITY COUNCIL DISTRICT 5
City Council President Cynthia D. Borrego

Richard Dineen, Architect and Robert Torres Architect

NORTHWEST MESA WINDOWS PROJECT

Table of Contents

- ▶ Introduction
- ▶ City Council District 5 map
- ▶ Interactive map showing 9 Window sites
- ▶ Site 1 Arroyo de las Calabacillas
- ▶ Site 2 Piedras Marcadas Canyon
- ▶ Site 3 Mariposa Basin Park
- ▶ Site 4 Boca Negra Dam and Overlook
- ▶ Site 5 AMAFCA Drainage Site-Grandma's Pond
- ▶ Site 6 Paradise Blvd.
- ▶ Site 7 Northern Geologic Window
- ▶ Site 8 Southern Geologic Window
- ▶ Site 9 Los Metates
- ▶ Link to Interactive map and public comments



NORTHWEST MESA WINDOWS PROJECT

Introduction

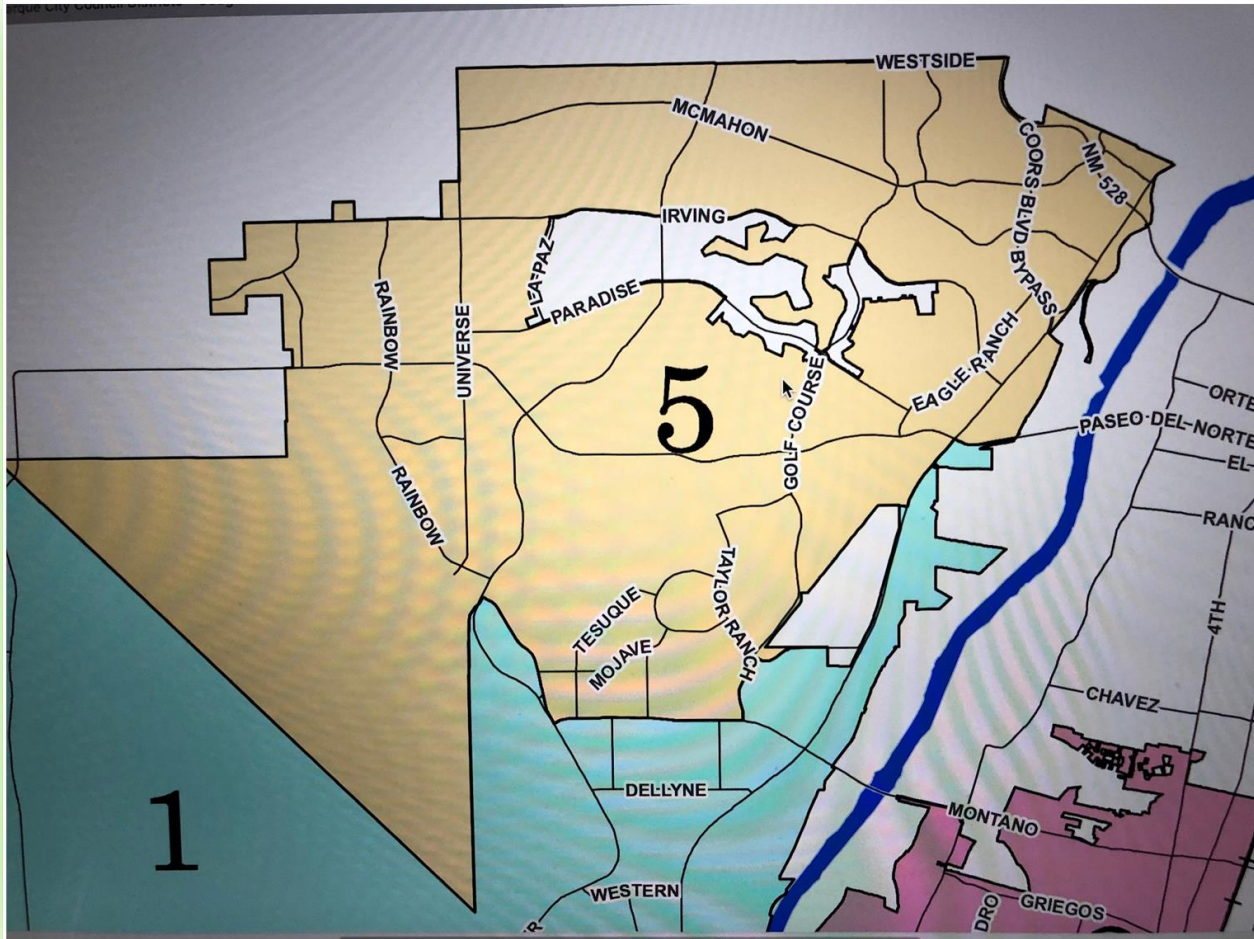
Proposed Windows Project initiated by City Council District 5 City Councilor Cynthia Borrego to engage and inform Albuquerque's west side residents of the valuable open-space amenities available throughout District 5

- ▶ Project identifies wide ranging public open space, parks, biking and hiking trails
- ▶ City Council District 5 offers the best unobstructed views of the mountains, the city, and city-wide Open Spaces
- ▶ District 5 provides extensive Public Open Spaces
- ▶ The project creates public awareness of the many trail connections found in District 5
- ▶ The project seeks to preserve existing and future amenities including views of natural landscapes



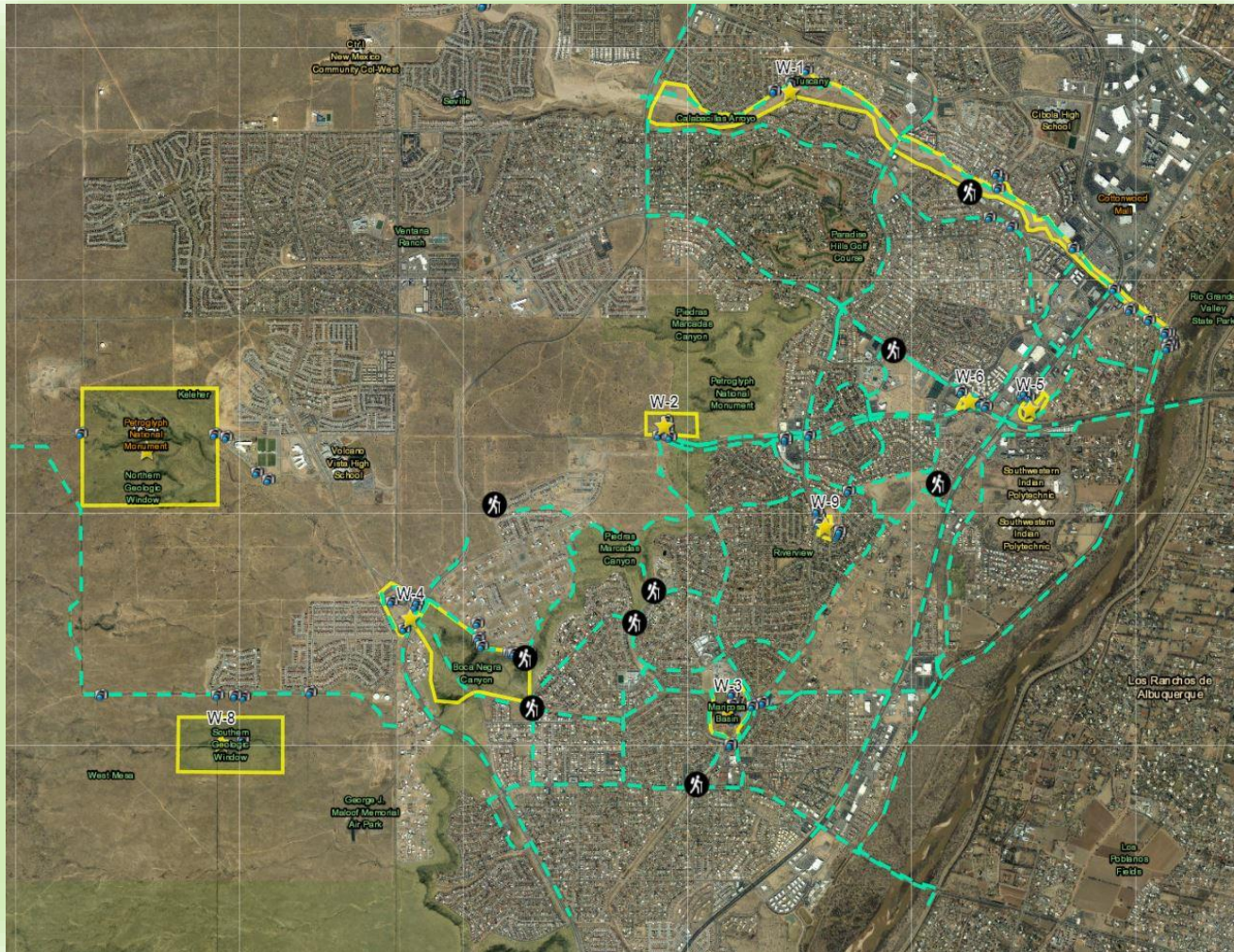
NORTHWEST MESA WINDOWS PROJECT

City Council District 5



NORTHWEST MESA WINDOWS PROJECT

Overall map



Potential Site Improvements



NORTHWEST MESA WINDOWS PROJECT SITE 1

Arroyo de las Calabacillas

Existing characteristics/facilities already in place include:

- ▶ Largest of the nine Window sites
- ▶ Vest pocket parks connect to hiking and biking trails
- ▶ Vest pocket parks offer unobstructed views of mountains and the City
- ▶ Vest pocket parks include rest and viewing areas, children's playground equipment, parking and lighting, and shaded rest areas with landscaping



NORTHWEST MESA WINDOWS PROJECT SITE 1

Arroyo de las Calabacillas



NORTHWEST MESA WINDOWS PROJECT SITE

2

Piedras Marcadas Canyon

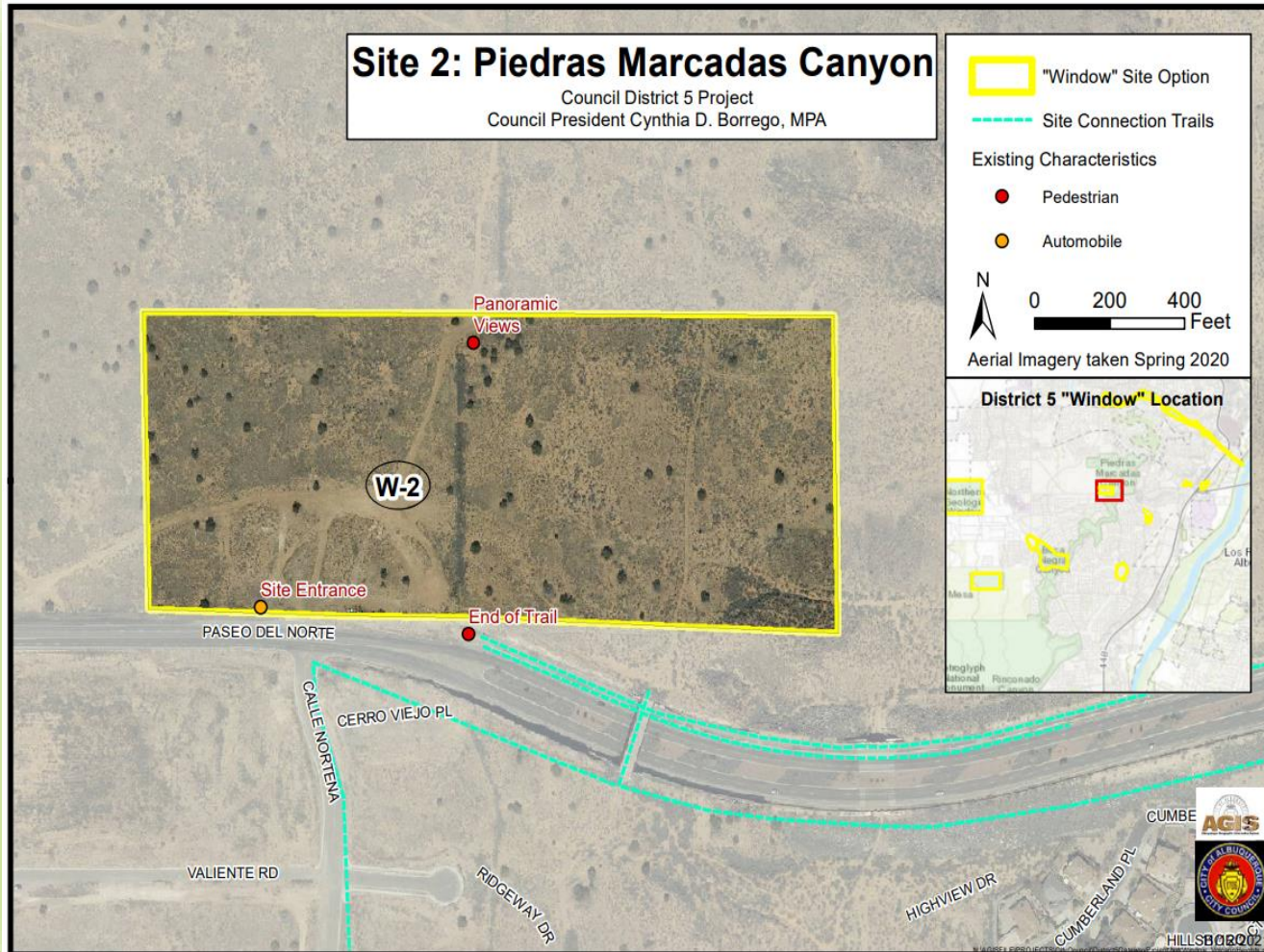
Existing characteristics include:

- ▶ Potential site for development of a multi-level viewing facility and park
- ▶ Unobstructive views of the Rio Grande Valley, Bosque river basin, Sandia Mountain, Manzano range, and city skyline
- ▶ Access to trails, pedestrian and bike routes



NORTHWEST MESA WINDOWS PROJECT SITE 2

Piedras Marcadas Canyon



NORTHWEST MESA WINDOWS PROJECT SITE 2

Piedras Marcadas Canyon

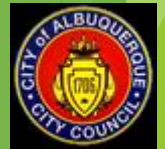


NORTHWEST MESA WINDOWS PROJECT SITE 3

Mariposa Basin Park

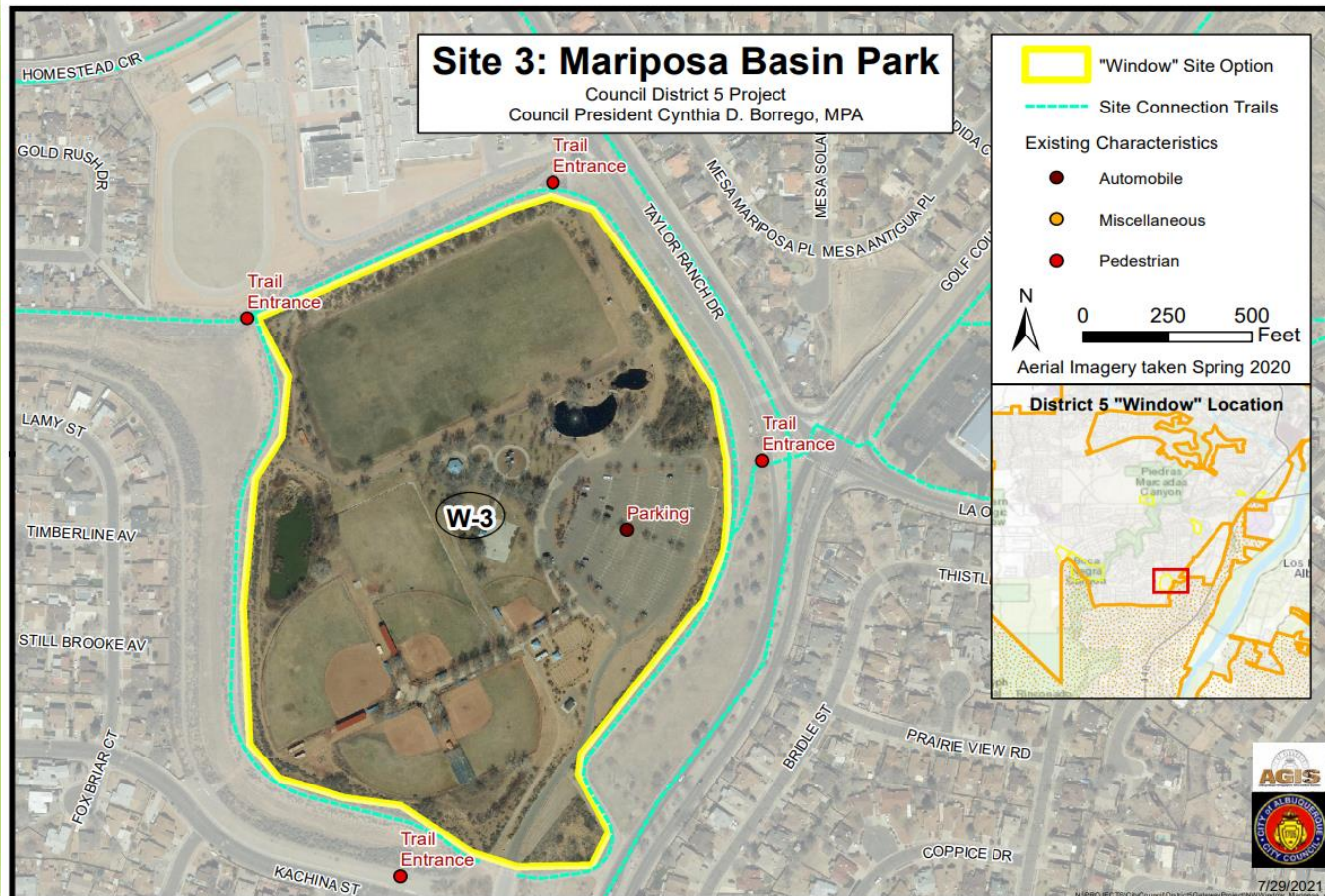
Existing characteristics/facilities already in place include:

- ▶ Major entrance to City Council District 5 close to the intersection of Montañó and Coors Blvd. NW
- ▶ This site provides unobstructed views of the volcanoes
- ▶ Existing parking lot connects to surrounding bicycle and pedestrian trails from the playing fields
- ▶ Other amenities include covered shelters for private parties, play areas, and athletic fields



NORTHWEST MESA WINDOWS PROJECT SITE 3

Mariposa Basin Park



NORTHWEST MESA WINDOWS PROJECT SITE 3

Mariposa Basin Park



NORTHWEST MESA WINDOWS PROJECT SITE 4

Boca Negra Dam and Canyon

Existing characteristics/facilities already in place include:

- ▶ Unobstructed views of the Rio Grande Valley, Bosque river basin, the City skyline, Sandia and Manzano ranges
- ▶ Parking connects to hiking and biking trails
- ▶ Major park amenities are in place such as viewing areas, park furniture, and hiking/biking trails

Future amenities might include:

- ▶ A pedestal with map and vicinity information, scattered parking, and rest areas



NORTHWEST MESA WINDOWS PROJECT SITE 4

Boca Negra Dam and Canyon



NORTHWEST MESA WINDOWS PROJECT SITE 5

Grandma's Pond: Tract 2B/AMAFCA Drainage Site

Existing Site Characteristics:

- ▶ Close to Paseo del Norte entrance to City Council District 5 and Northwest Mesa and Coors Blvd. NW
- ▶ Visible Windows site located next to Paseo del Norte major auto intersection
- ▶ Links to trails leading to the Rio Grande Valley Park
- ▶ Adjacent to existing hiking trail and bike lanes on Coors and proposed bikeways along the Corrales canal to the east side of the site

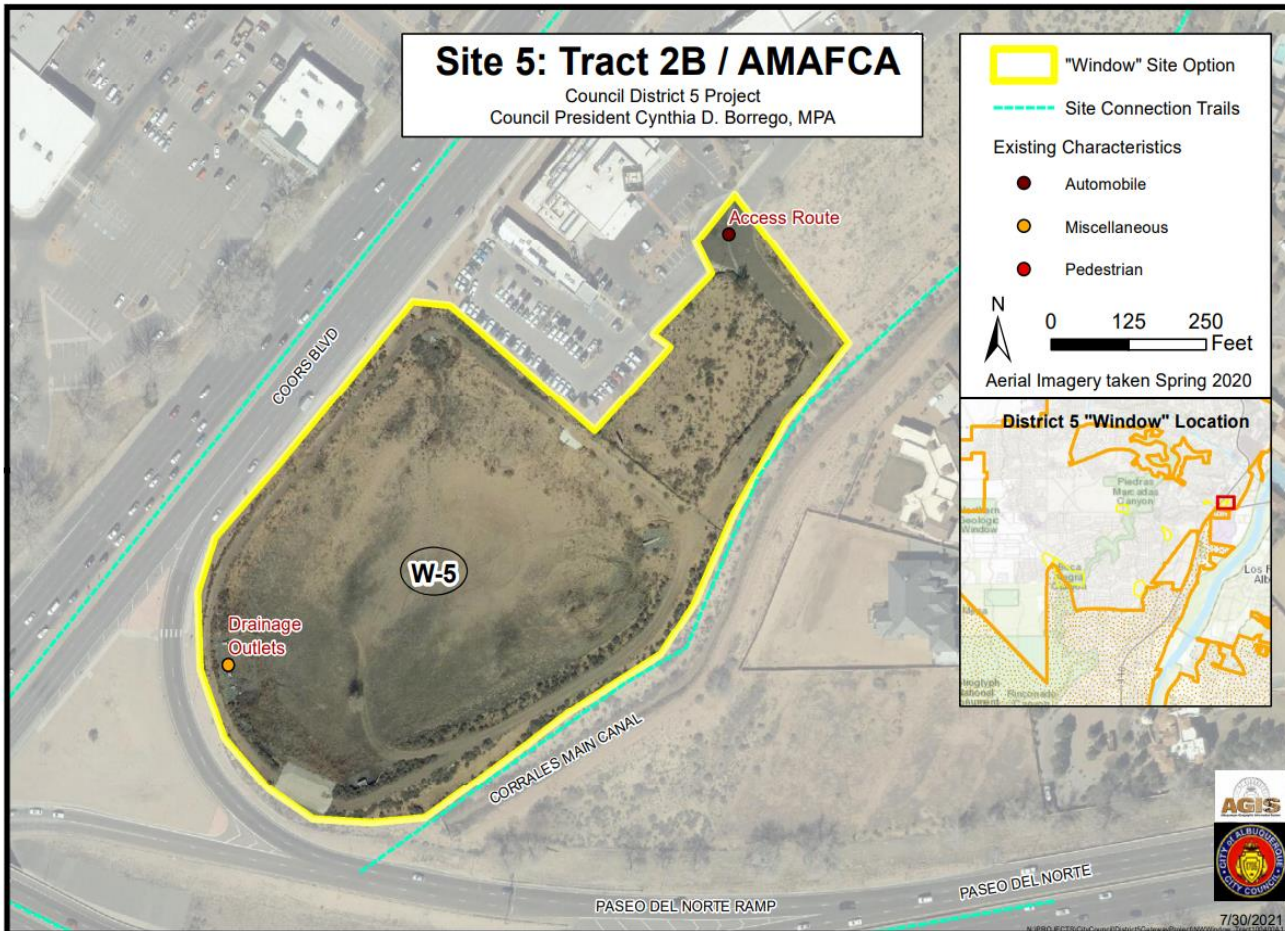
Future characteristics/needs to be determined:

- ▶ Site feasibility yet to be determined
- ▶ Automobile and pedestrian access needs improvement
- ▶ Any improvements/new amenities will require a joint-use agreement with AMAFCA



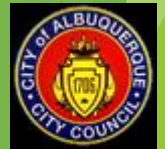
NORTHWEST MESA WINDOWS PROJECT SITE 5

Grandma's Pond: Tract 2B/AMAFCA Drainage Site



NORTHWEST MESA WINDOWS PROJECT SITE 5

Grandma's Pond: Tract 2B/AMAFCA Drainage Site



NORTHWEST MESA WINDOWS PROJECT SITE 6

Tract A1 100400 on Paradise Blvd, south of Eagle Ranch Rd. NW

Existing Site Characteristics:

- ▶ Hiking and biking trails along Paradise Blvd link to other trails
- ▶ Unobstructed views of the Rio Grande Valley, Bosque river basin, Sandia and Manzano Mountain ranges

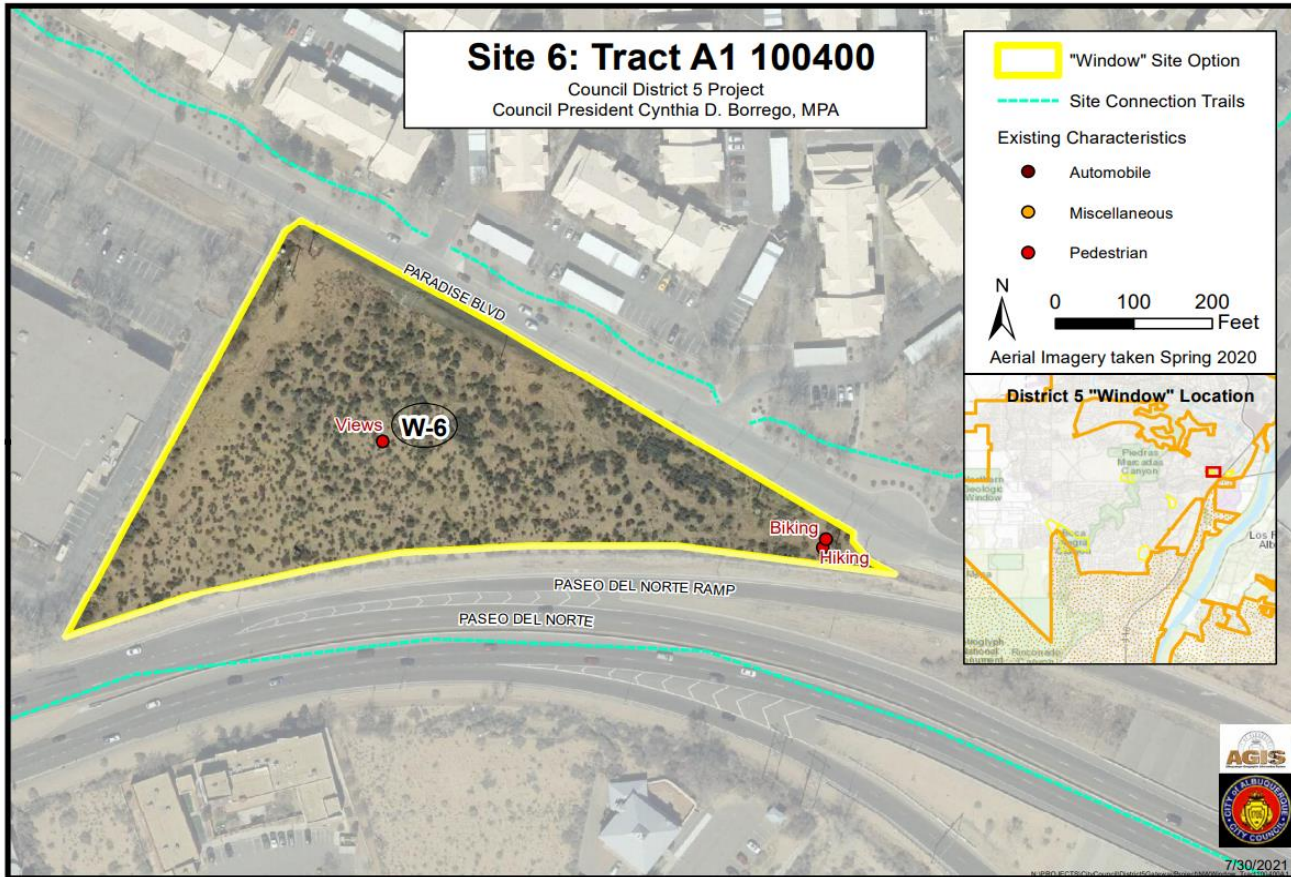
Future Site Improvements

- ▶ Sloping site will allow future terraced improvements
 - viewing area stations
 - parking
 - family activity areas
 - children's playground areas
 - and senior activity areas



NORTHWEST MESA WINDOWS PROJECT SITE 6

Tract A1 100400 on Paradise Blvd, south of Eagle Ranch Rd. NW



NORTHWEST MESA WINDOWS PROJECT SITE 6

Tract A1 100400 on Paradise Blvd, south of Eagle Ranch Rd. NW



NORTHWEST MESA WINDOWS PROJECT SITE 7

Northern Geological Window

Existing characteristics/facilities already in place include:

- ▶ Unobstructed views of Rio Grande Valley, Bosque river basin, the City skyline, and Sandia and Manzano mountain ranges
- ▶ Vest pocket parks at the Molten Rock entrance to Ventana Ranch subdivision, as well as scattered vest pocket parks in the subdivision are assets to the area

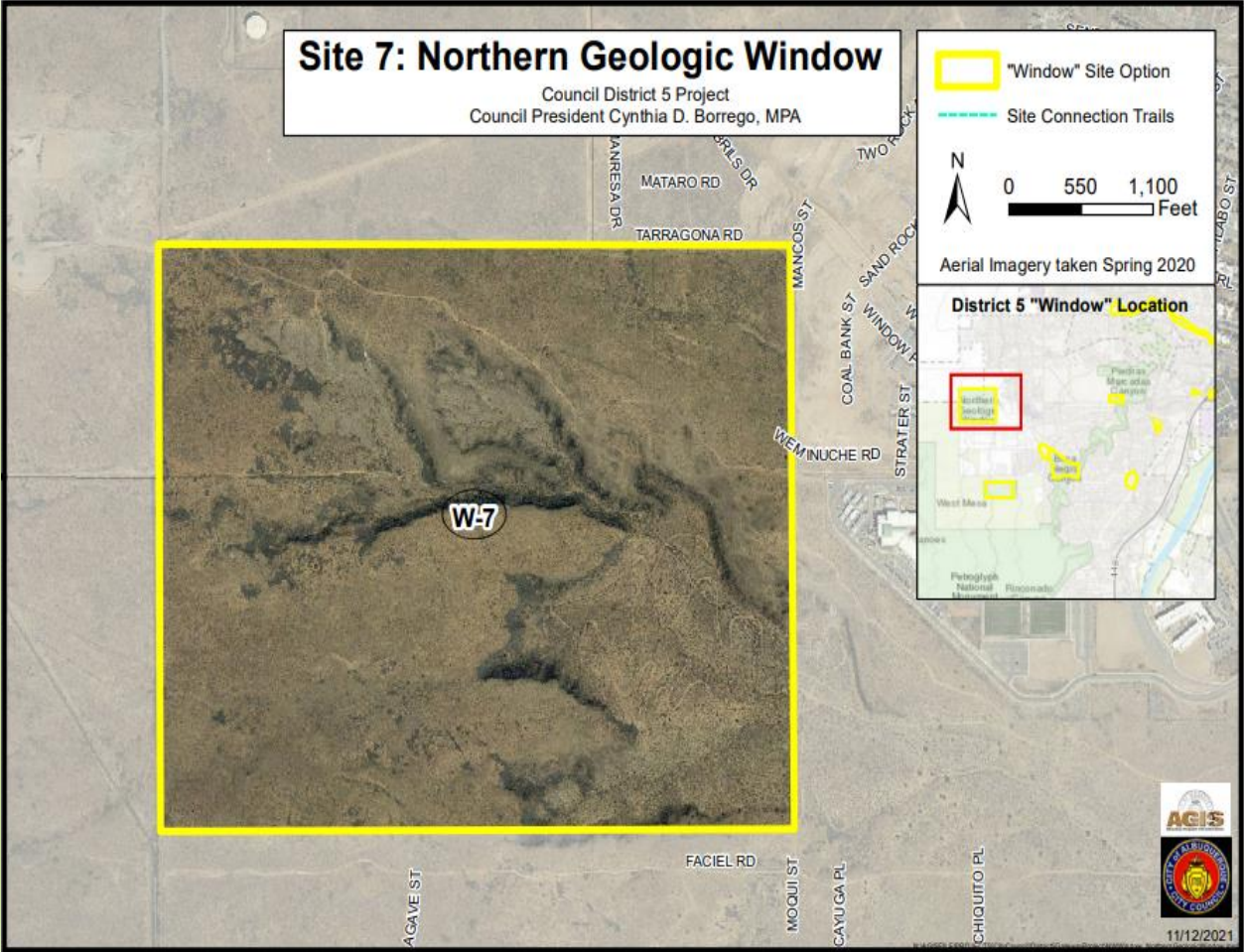
Future facility characteristic proposals include:

- ▶ Parking connections to hiking and bicycling trails
- ▶ Major park amenities such as viewing areas, park furniture, trails leading to hiking/biking trails
- ▶ Future proposed amenities: pedestal with map and vicinity information, scattered parking, rest areas



NORTHWEST MESA WINDOWS PROJECT SITE 7

Northern Geological Window



NORTHWEST MESA WINDOWS PROJECT SITE 7

Northern Geological Window



NORTHWEST MESA WINDOWS PROJECT SITE 8

Southern Geological Window

Existing characteristics/facilities already in place include:

- ▶ Unobstructed views of Rio Grande Valley, Bosque river basin, Sandia and Manzano mountain ranges, and the City skyline

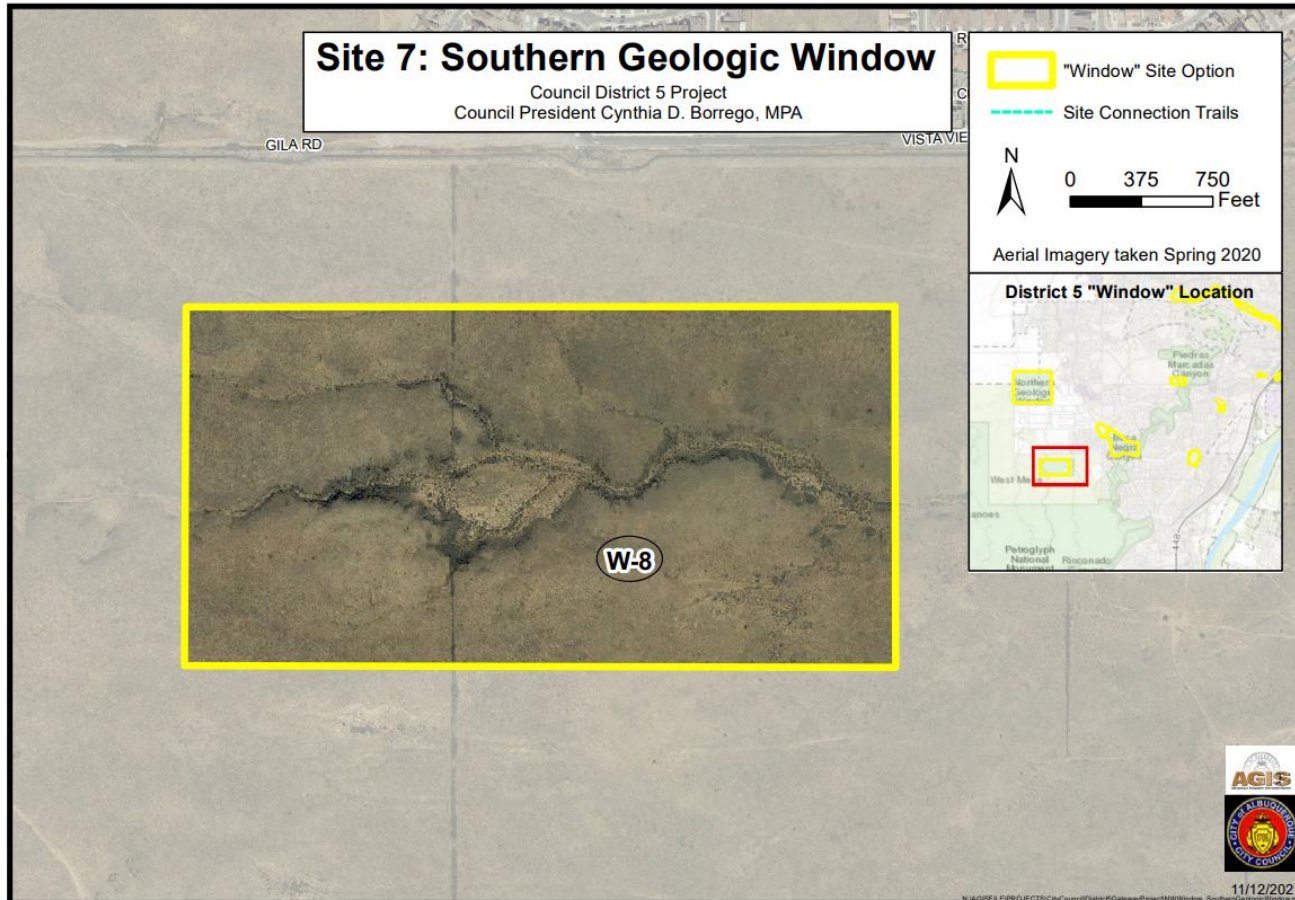
Future characteristics facilities include:

- ▶ Parking connections to existing hiking and bike trails
- ▶ Major park amenities such as viewing areas, park furniture, trails leading to hiking/biking trails
- ▶ Future proposed amenities: pedestal with map and vicinity information, scattered parking, rest areas



NORTHWEST MESA WINDOWS PROJECT SITE 8

Southern Geological Window



NORTHWEST MESA WINDOWS PROJECT SITE 8

Southern Geological Window

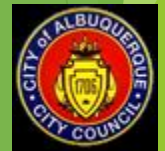


NORTHWEST MESA WINDOWS PROJECT SITE 9

Los Metates

Existing Site Characteristics:

- ▶ No site acquisition costs--the site is zoned as public open space.
- ▶ Site location is central to many trail connections: site is located along and nearby to the existing bicycling and hiking trails including the Piedras Marcadas Dam trail system, Mariposa Basin Park, Petroglyph National Monument trails, and more
- ▶ Unobstructed views of the Rio Grande Valley, Bosque river basin, City skyline, Sandia and Manzano mountain ranges
- ▶ Future parking and other improvements will not disturb natural landscaping or nearby residents surrounding the site
- ▶ Sloping site allows terraced improvement areas for viewing stations, parking, family activity areas, children's playground areas, and senior activity areas



NORTHWEST MESA WINDOWS PROJECT SITE 9

Los Metates



NORTHWEST MESA WINDOWS PROJECT SITE 9

Los Metates



NORTHWEST MESA WINDOWS PROJECT

Link for Albuquerque NW Mesa Windows Interactive map

tinyurl.com/CABQNorthwestWindows

Link for public constituents to submit suggestions, questions, or review comments

<https://www.cabq.gov/council/find-your-councilor/district-5/district-5-windows-celebratory-parks/?11121>

Questions? Contact

[**Tom Menicucci 505-768-3126;**](tel:505-768-3126)
[**tmenicucci@cabq.gov**](mailto:tmenicucci@cabq.gov)

