

Tinwork

NEW MEXICO

TIN WORKER • HOJALATERO

- What They Made -

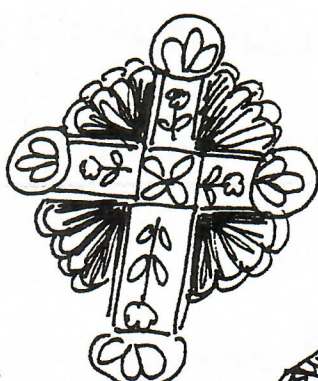


Reliquaries and Niche Boxes (w/ Bibles)

Crowns for Saints



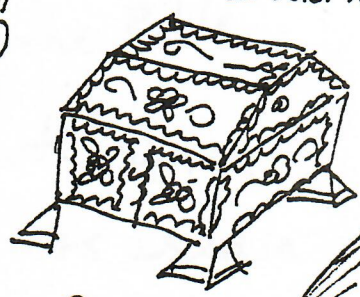
Frames & Mirrors (w/ devotional lithographs)



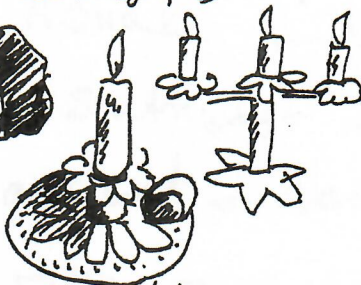
Crosses



Lanterns



Boxes (w Glass + wall paper)



Candelabras



How Tin Came to New Mexico

BACK GROUND

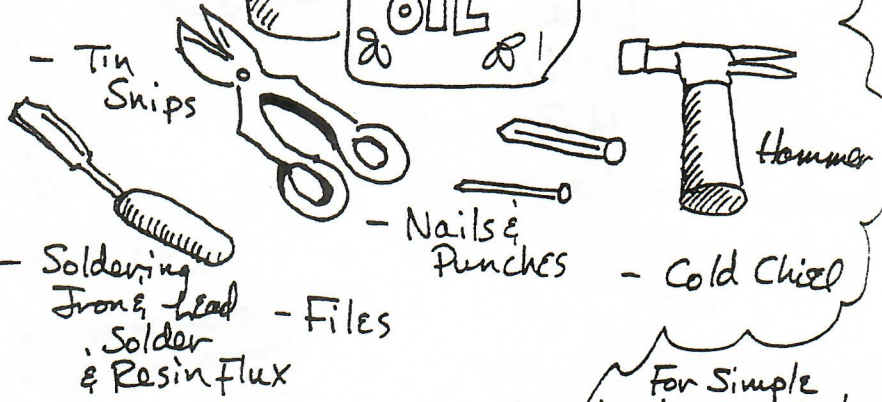
- 1776 - Earliest New Mexico reference to tinwork
- 1840 - Materials become easily available
- 1860-1890 Period of greatest productivity.
- 1879 Materials became available by railroad
- 1890 - Gas & Coal replaced candles for light creating less demand for tinwork
- Frames were now produced commercially so tinwork became less popular

MATERIALS

- Lamp oil / Lard Cans
- Devotional Lithographs
- Window Glass
- Wall Paper



- Vise
- Heavy Gloves
- Pliers



For Simple hands on projects call the APS Arts Ctr.

Books ① New Mexico Tinwork (UNM Press)
Lane Coulter & Maurice Dixon Jr (Historical)
② New Crafts Tinwork (Lorenz Books)
Marion Elliot
③ New Mexico Village Arts (UNM Press)
Roland F. Dickey