



# Socioeconomics, Transportation Trends, & Scenario Planning in the MRCOG Region

Albuquerque – Bernalillo County  
Air Quality Control Board  
September 11, 2013



**Mid-Region Council of Governments**

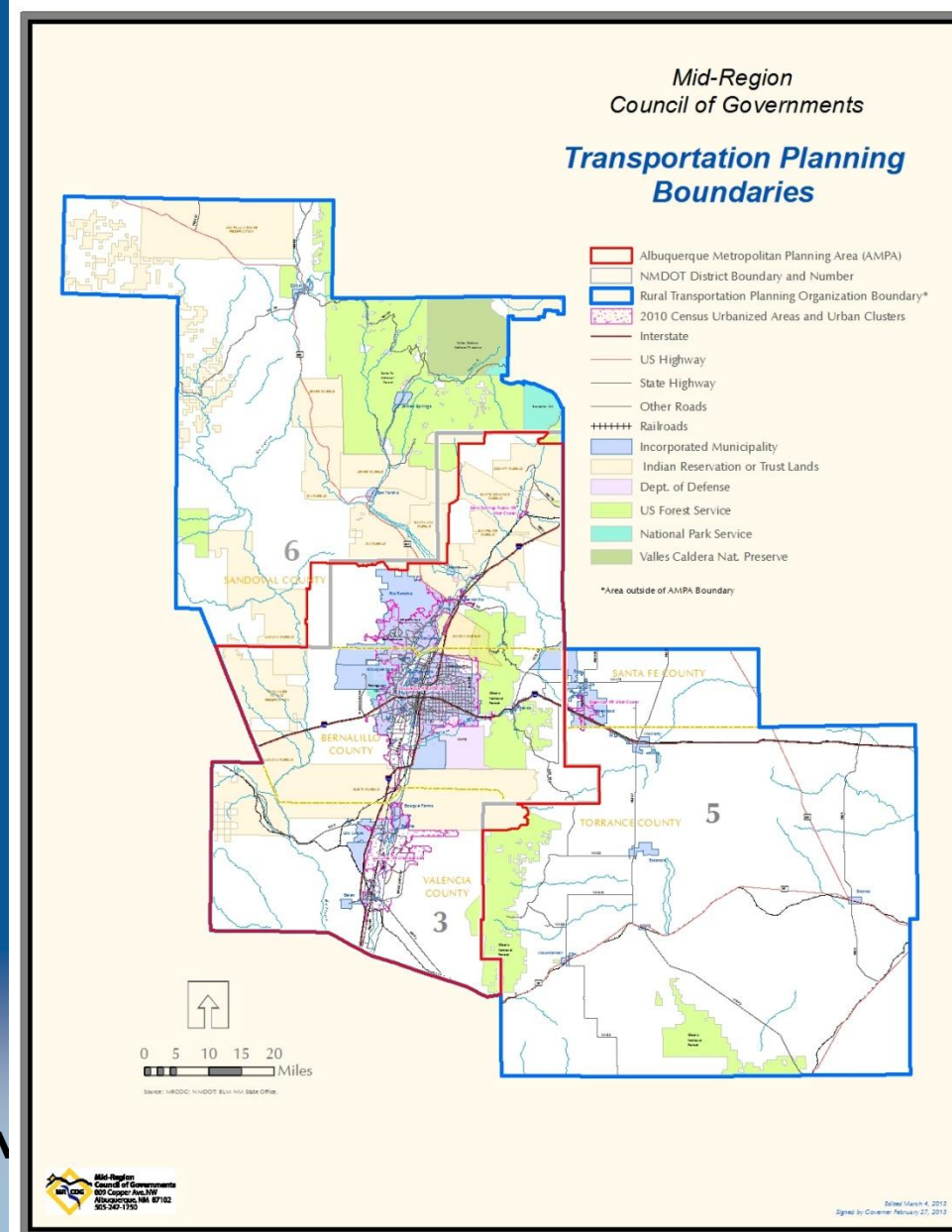
# A Little Bit About MRCOG...

## •Mid-Region Council of Governments

- Established in 1969 through State Statute
- Regional Land Use, Water, Economic Development & Transportation Planning

## •Metropolitan Planning Organization

- Established in 1973 through the Federal-Aid Highway Act
- Program Federal Metropolitan Transportation \$\$ using the 3-C's



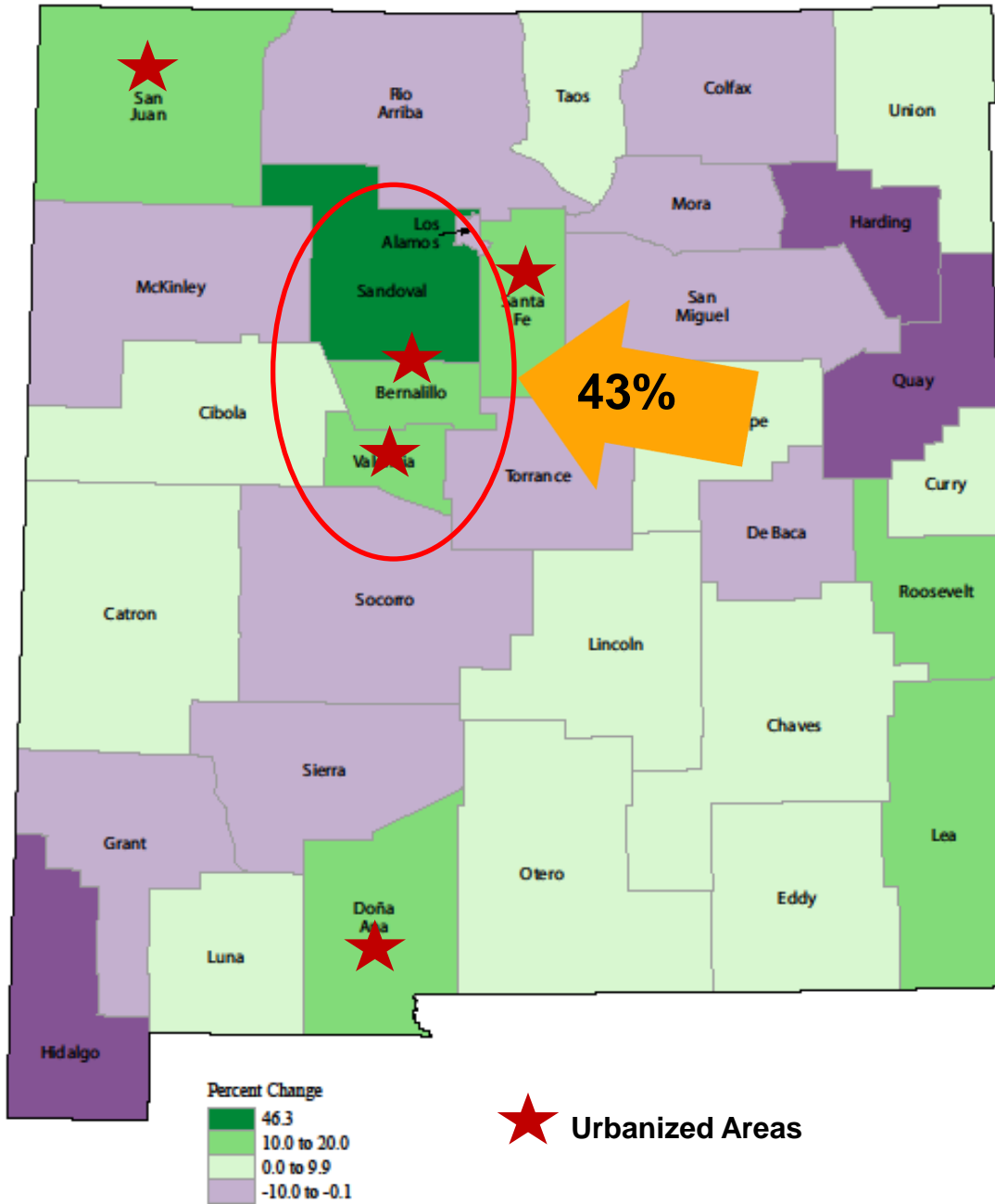
# Historical Trends



**Mid-Region Council of Governments**

# NEW MEXICO - 2010 Census Results

## Percent Change in Population by County: 2000 to 2010



# Slowed Pace of Growth

## Average Annual Growth Rate

Albuquerque, MSA

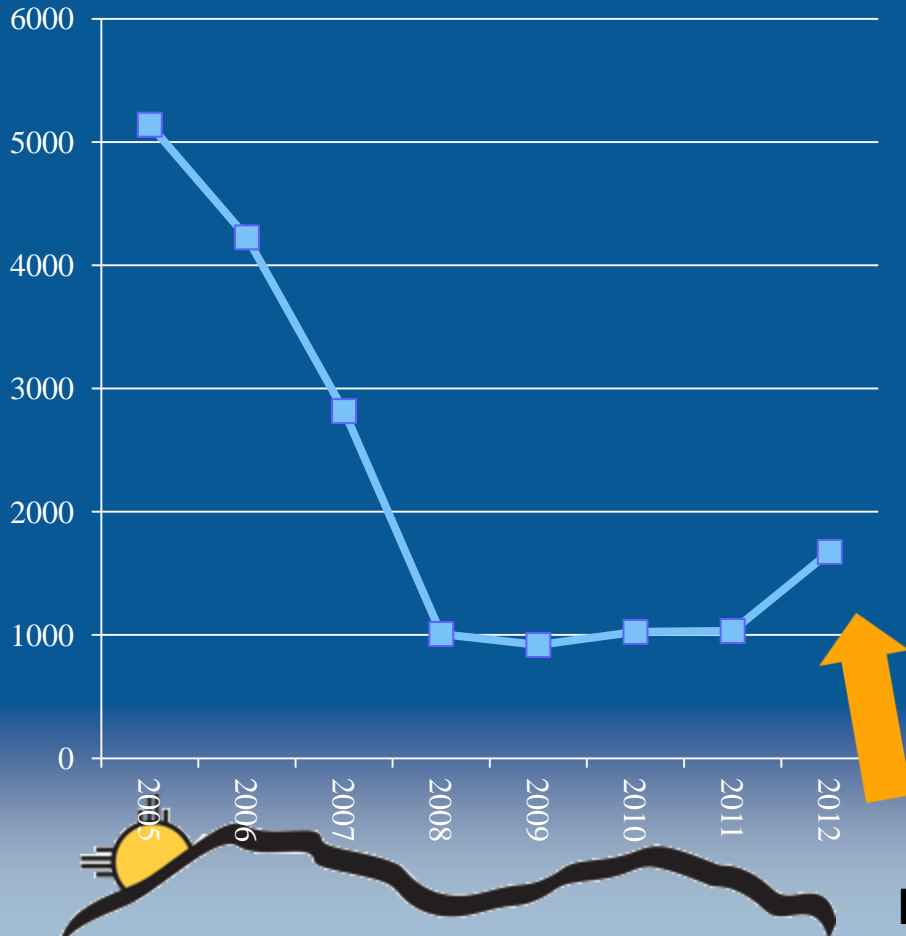


**Mid-Region Council of Governments**

# Economic Influences

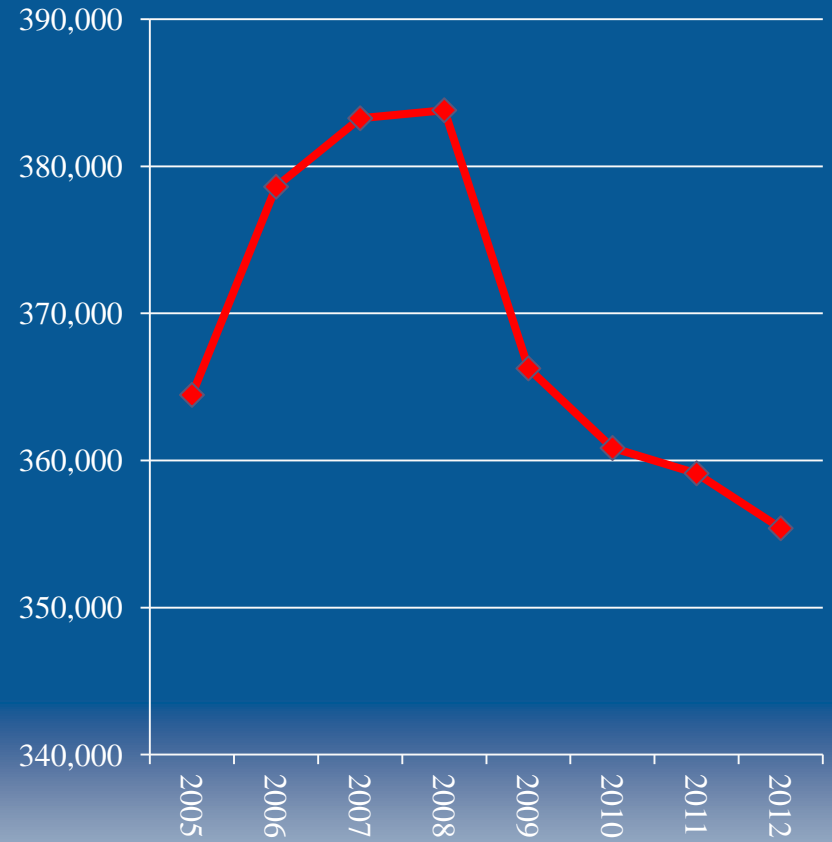
## Residential Units Permitted

City of Albuquerque



## Employment

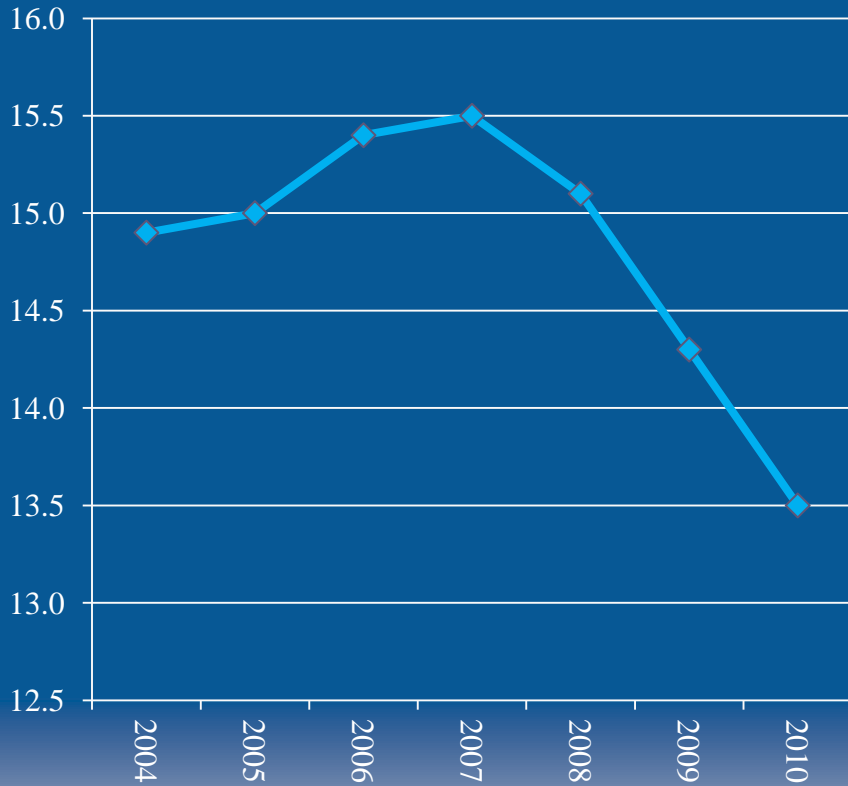
Albuquerque, MSA



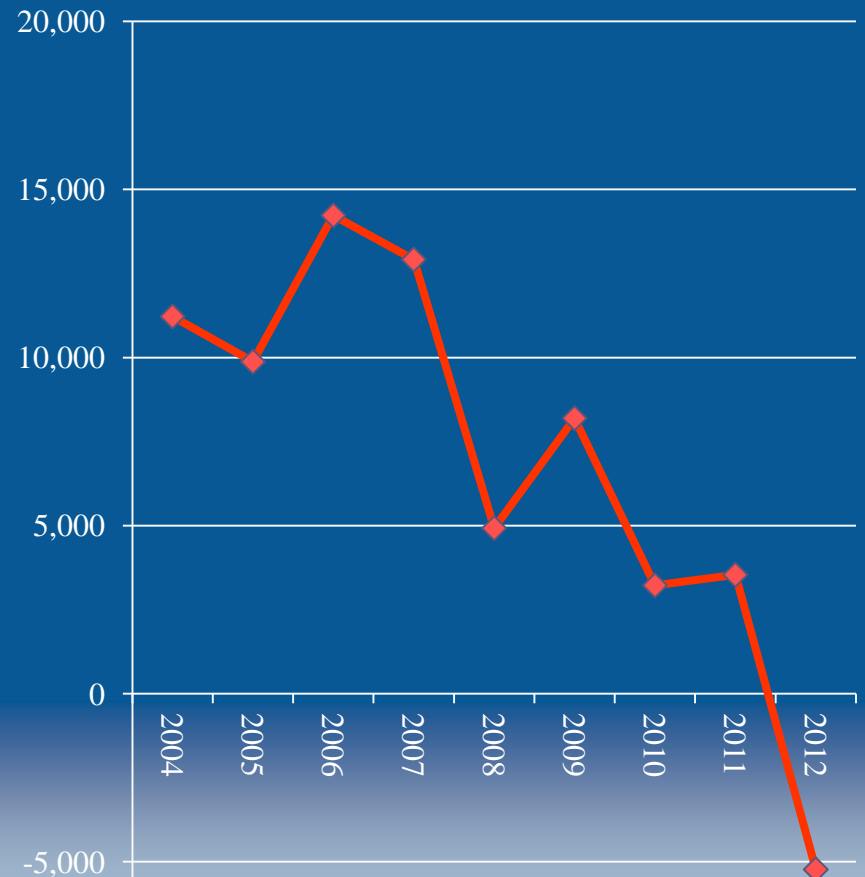
**Mid-Region Council of Governments**

# Shifting Demographics

**Birth Rate**  
(per 1,000)



**NM Migration**  
(net)



**Mid-Region Council of Governments**



# The Forecast

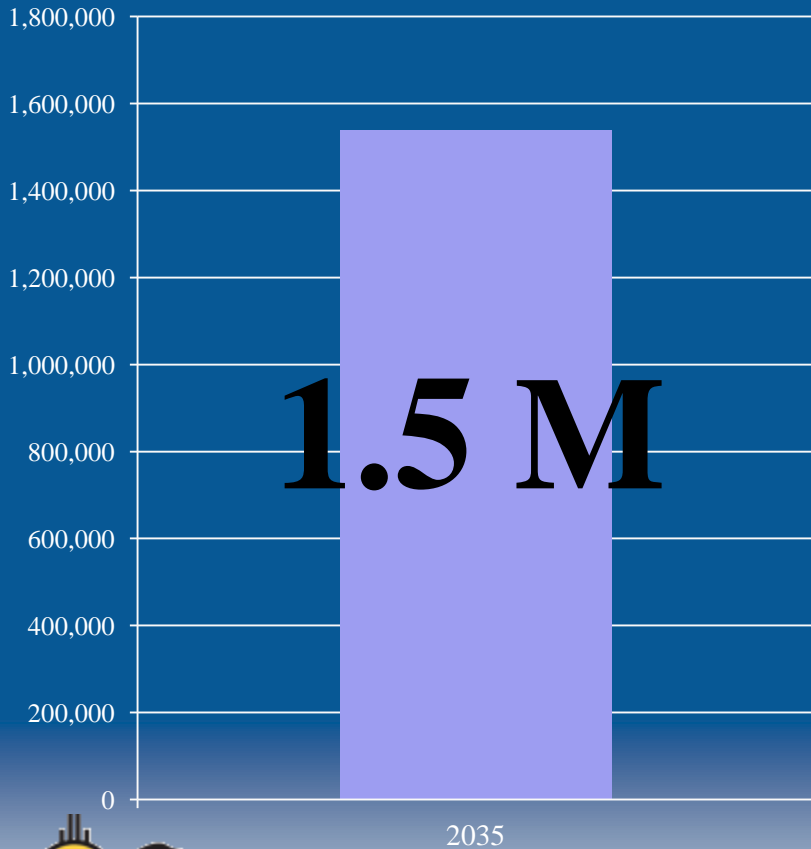


**Mid-Region Council of Governments**

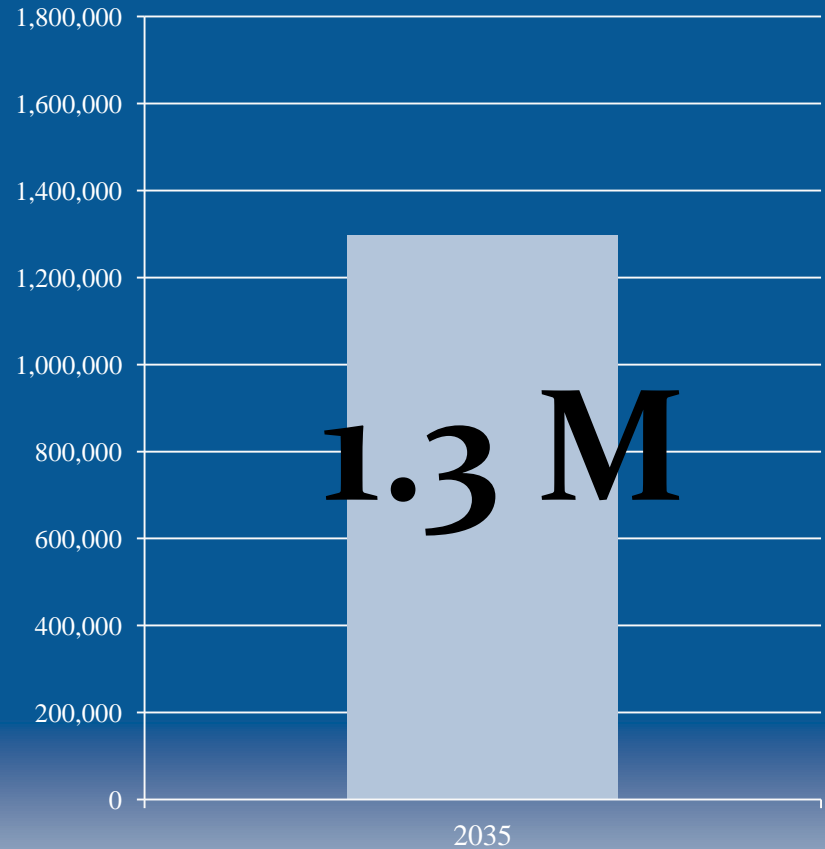


# The 2035 Population Forecast

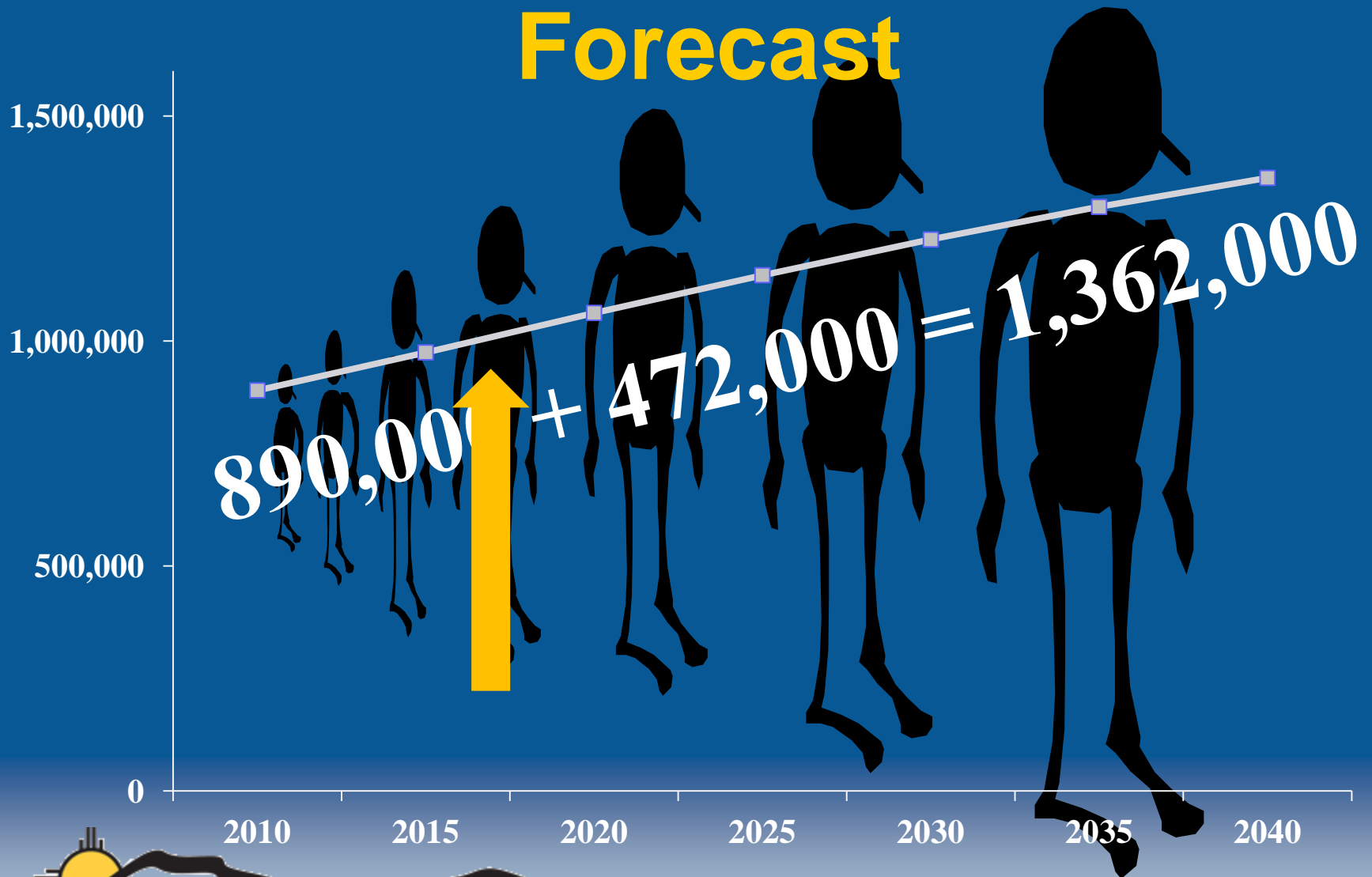
2035 MTP



2035 Revised Forecast

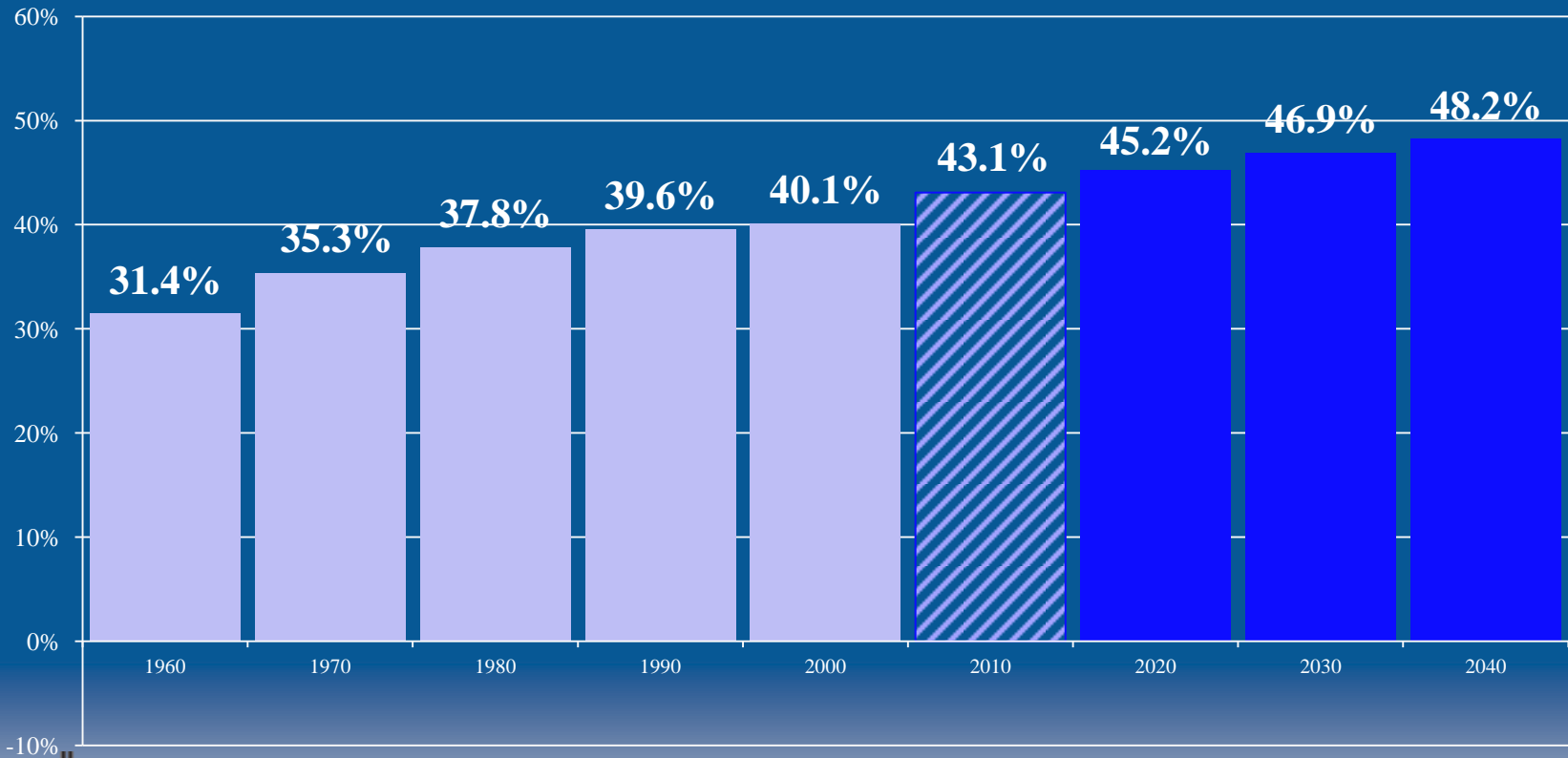


# The 2040 Population Forecast



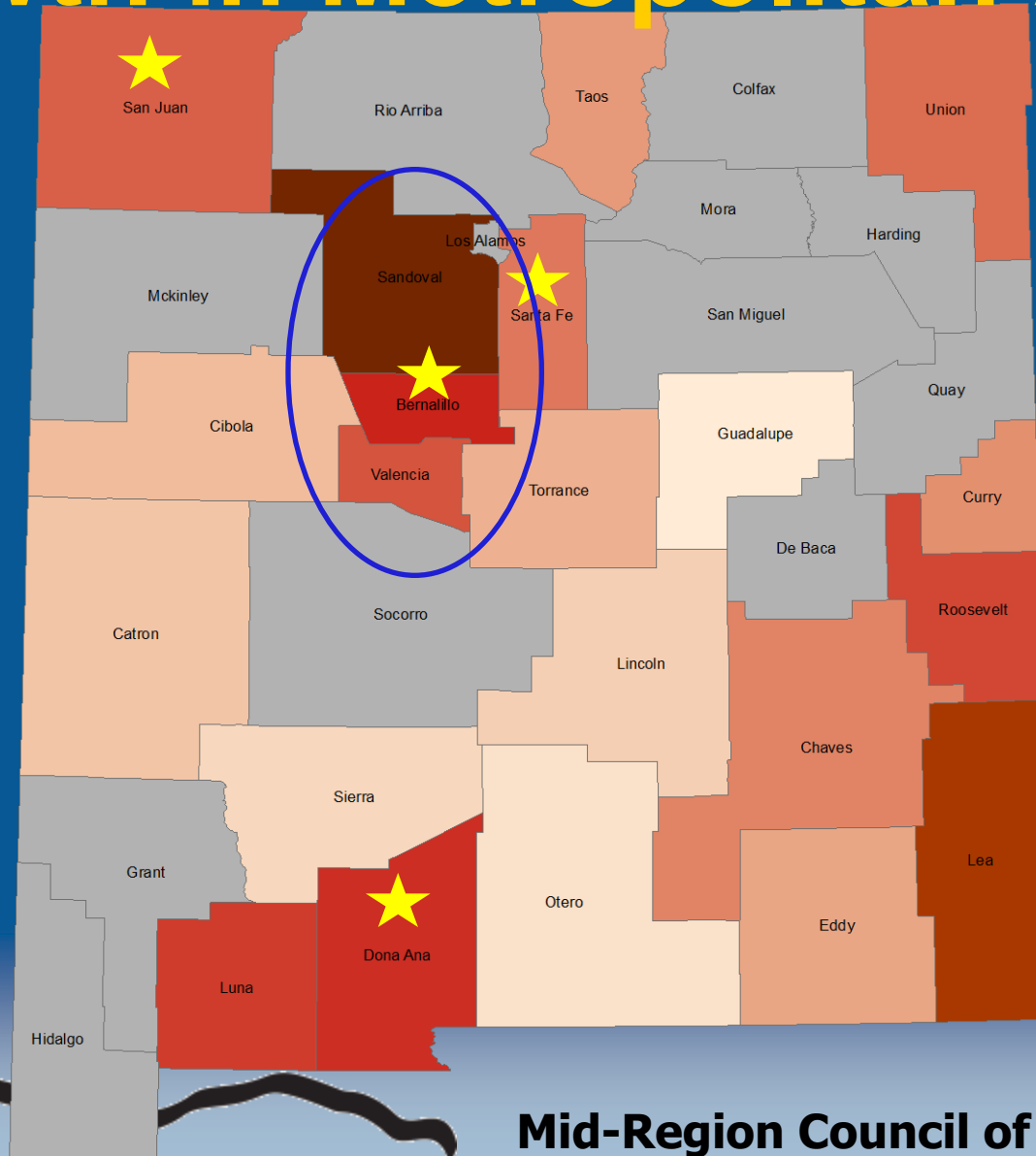
# Growing Presence within the State

Albuquerque MSA,  
Historical and Projected



**Mid-Region Council of Governments**

# Growth in Metropolitan Areas

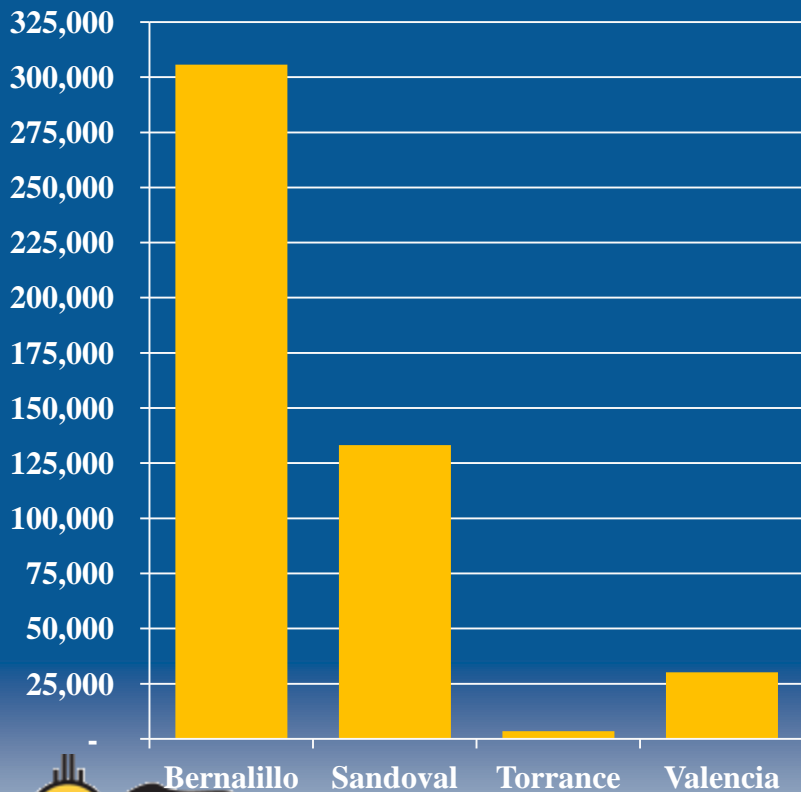


**Mid-Region Council of Governments**

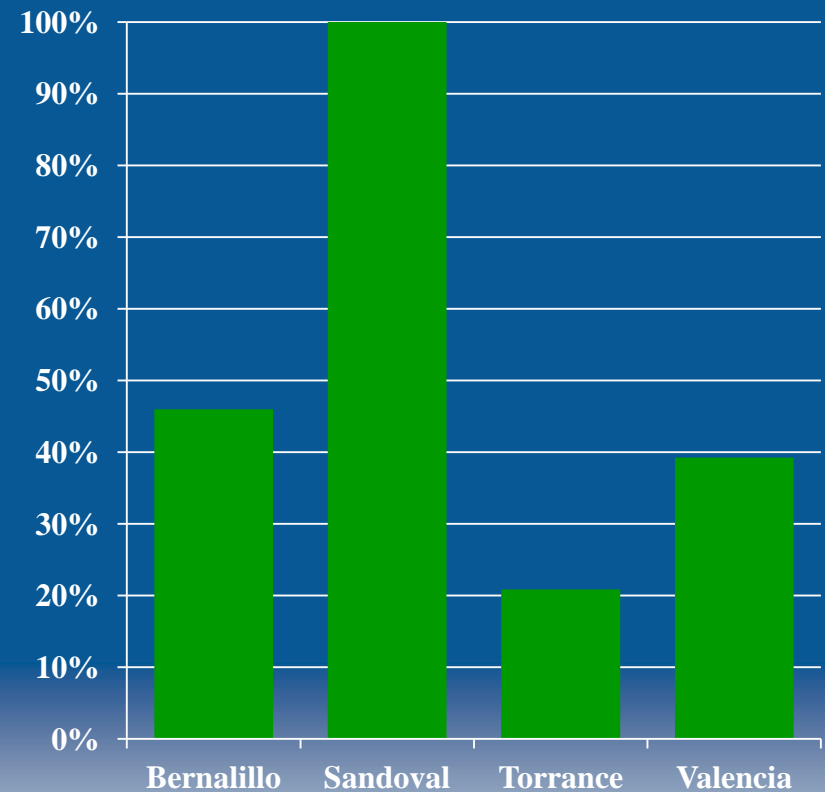


# 30 Year Growth by County

## Absolute Growth



## Percentage Growth

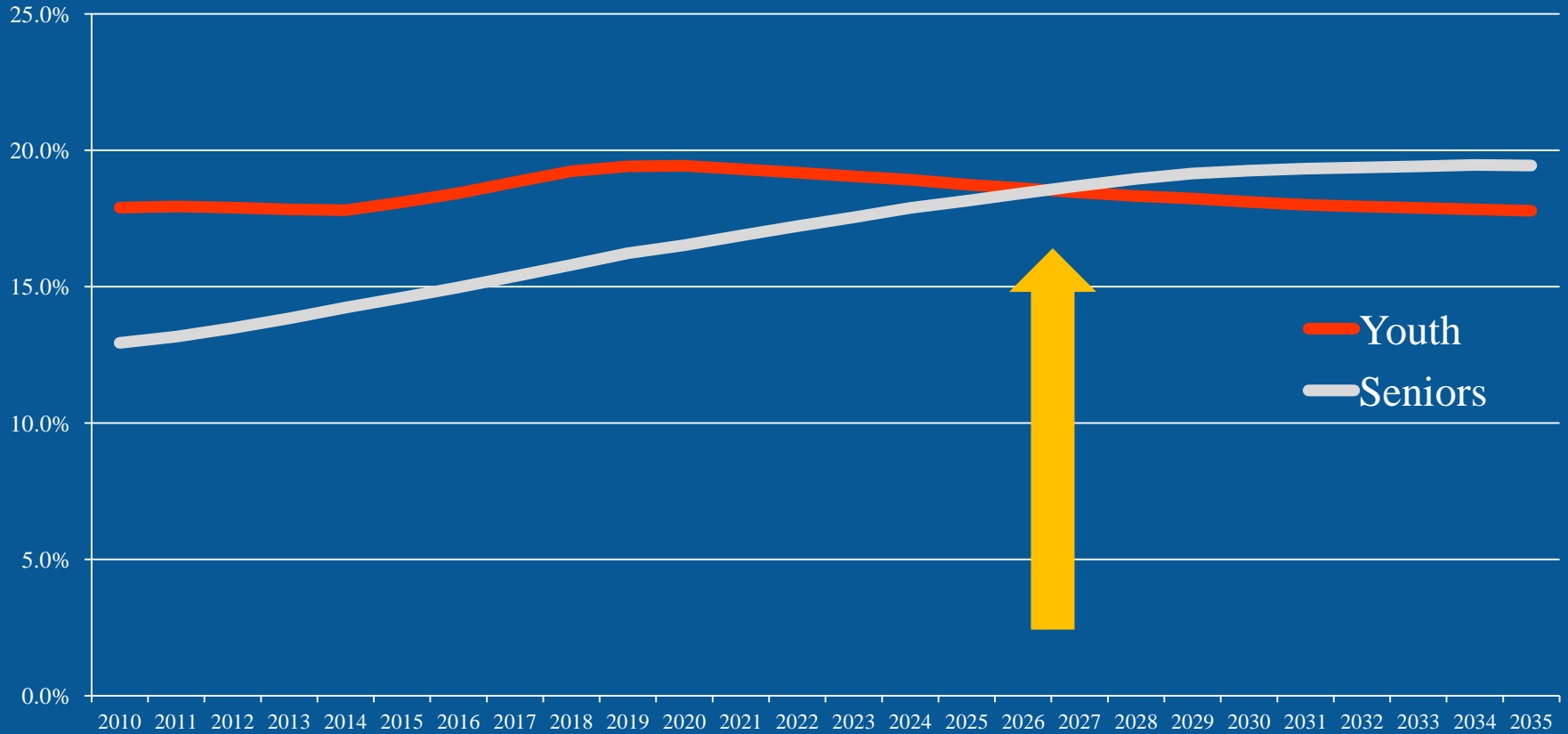


# Demographics & Housing



**Mid-Region Council of Governments**

# An Aging Population

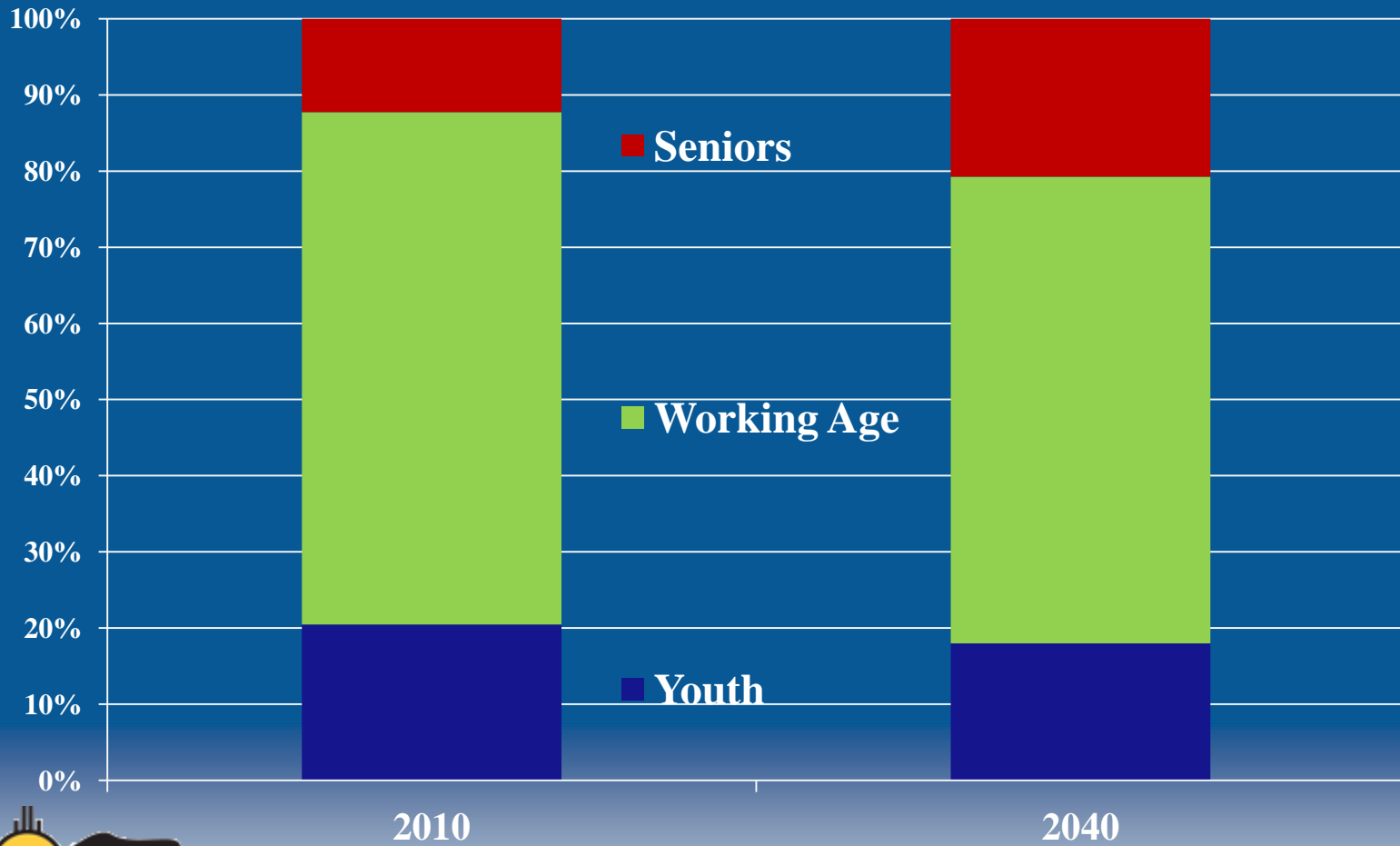


**Demographically, the boomers are sure going to shake things up!**



**Mid-Region Council of Governments**

# Shrinking Workforce

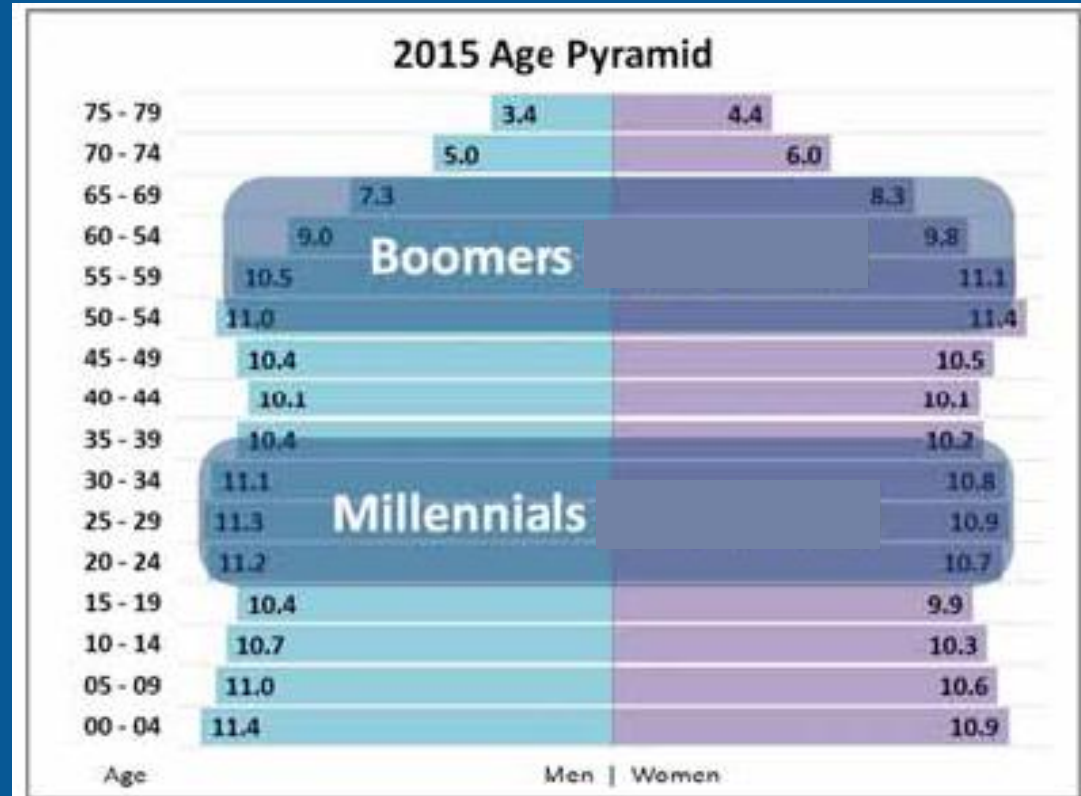




# Demographics

◆ Very Similar

◆ Very Different

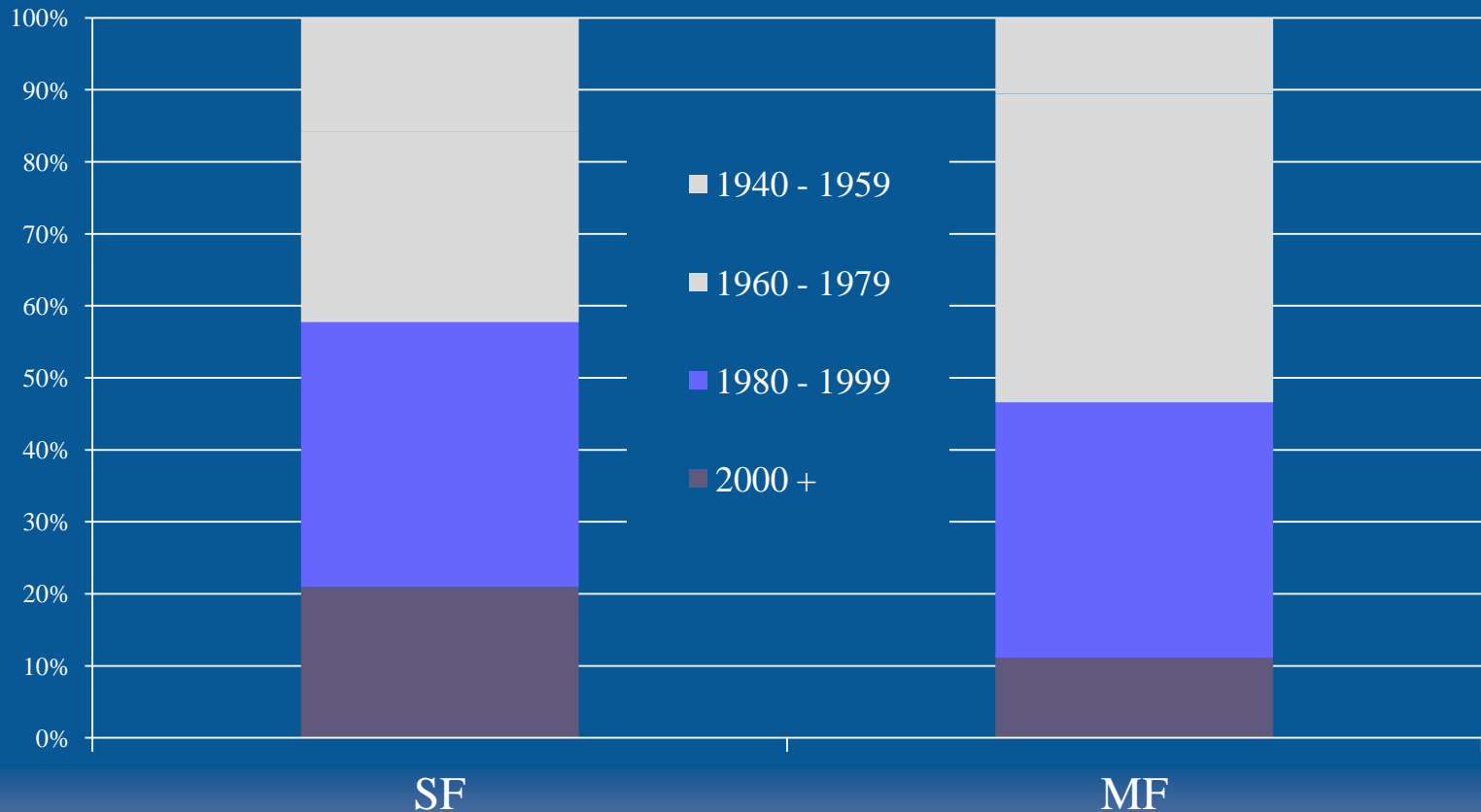


# Generation Y

- ◆ Born early 1980's to early 2000's
- ◆ They are 3 times more likely to use transit (18% compared with 6%)
- ◆ 63% are expected to move within the next 5 years
- ◆ Preference for smaller home closer to work

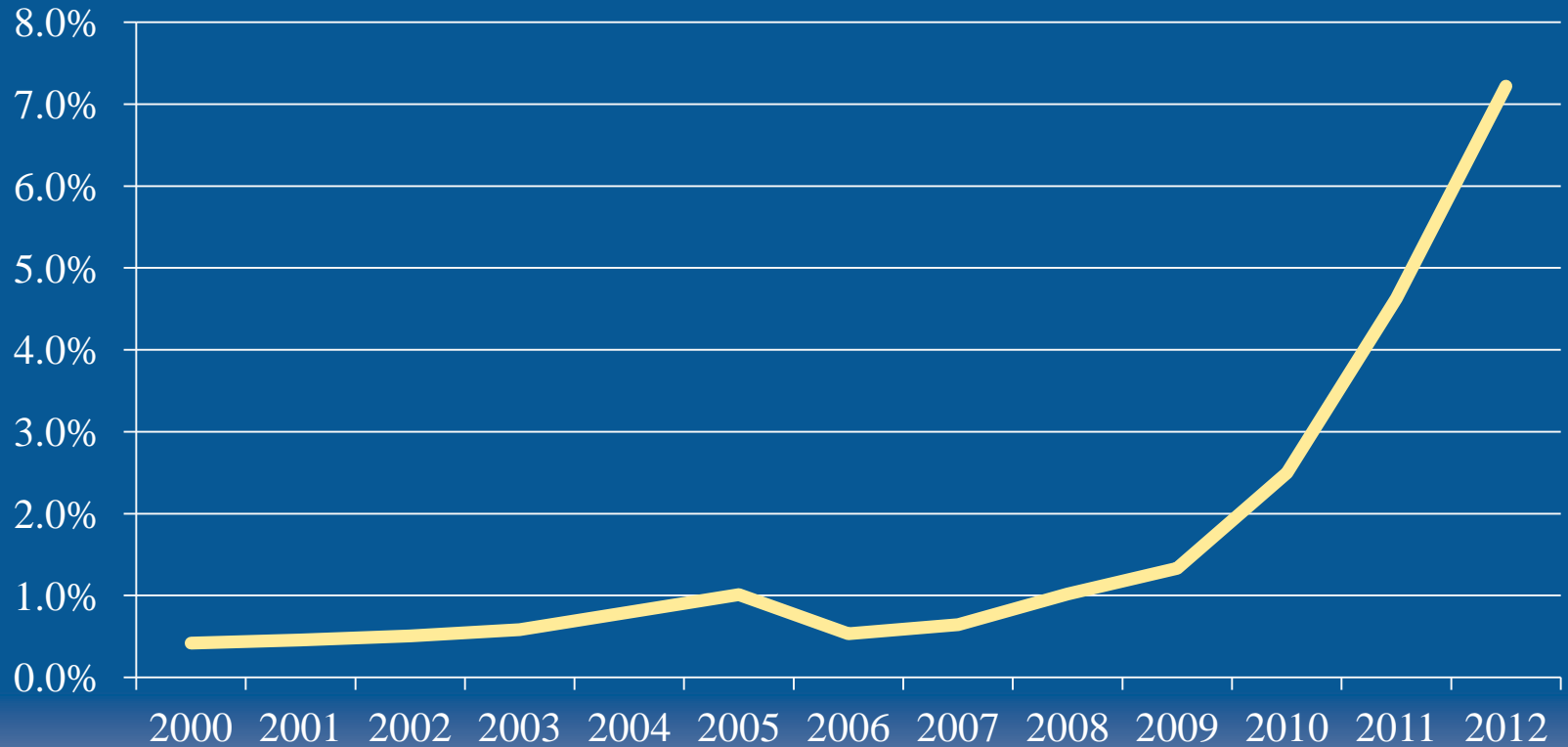


# Age of Housing by Type



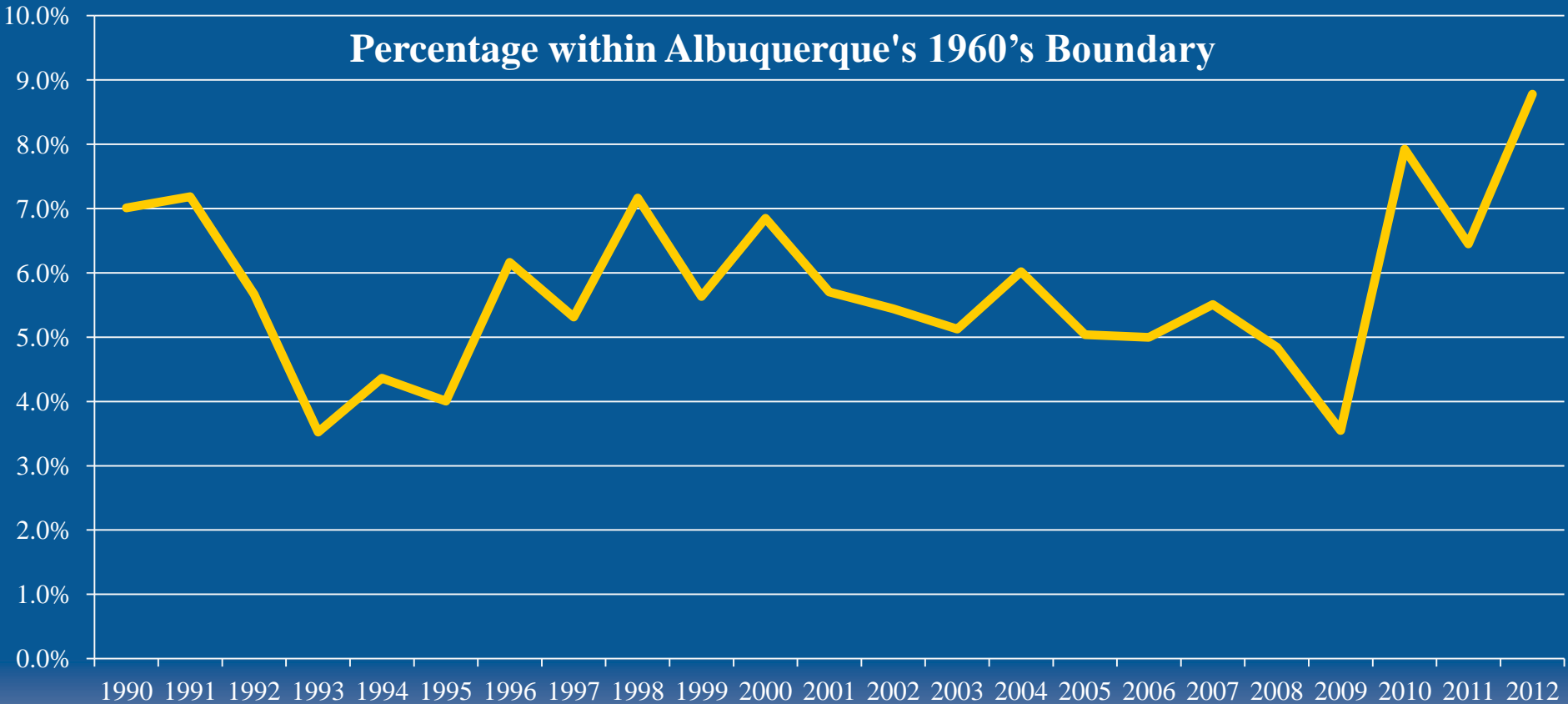
# Multi-Family Construction

Share of MF permits in Albuquerque

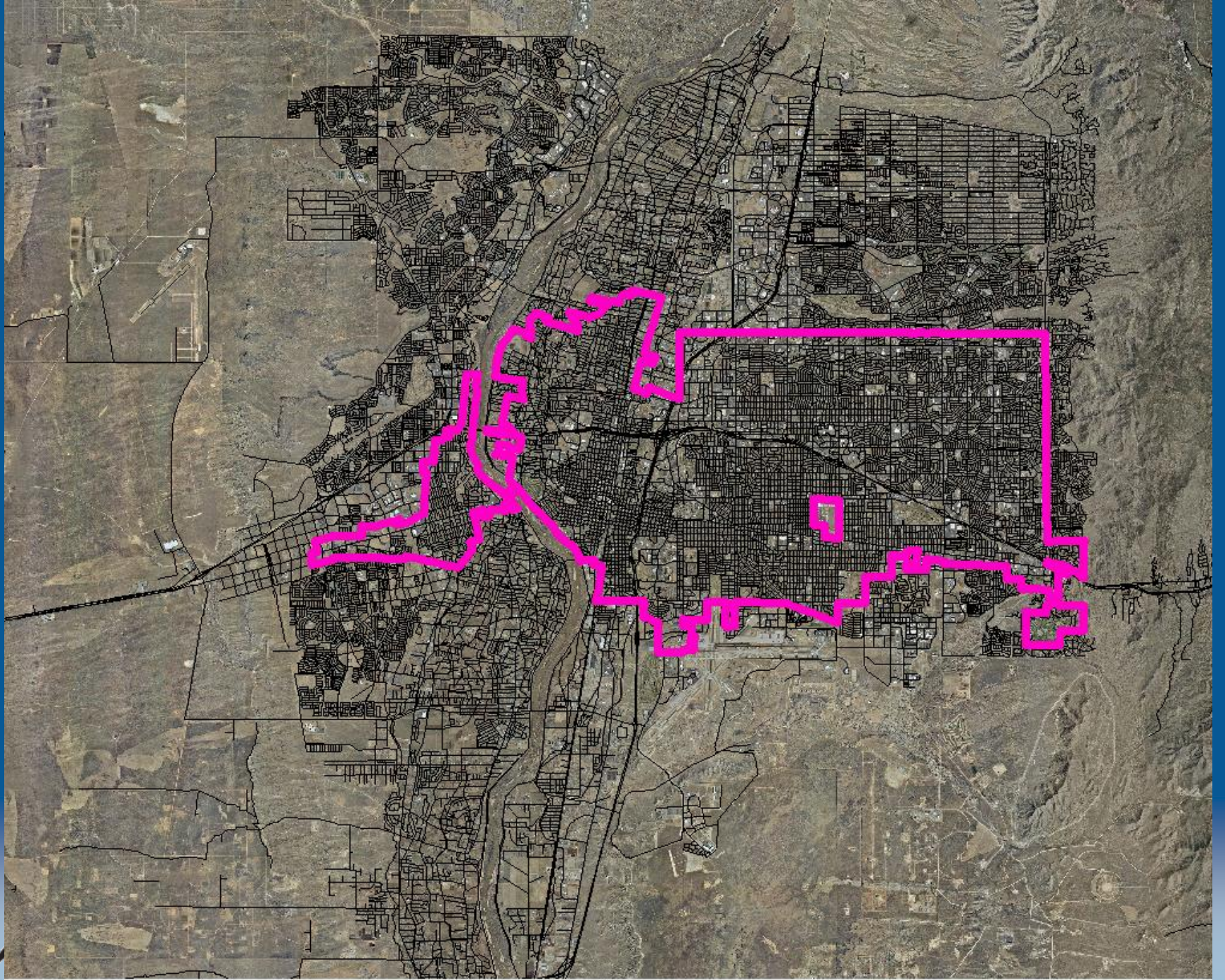


# Residential Permits in the “Urban Core”

Percentage within Albuquerque's 1960's Boundary

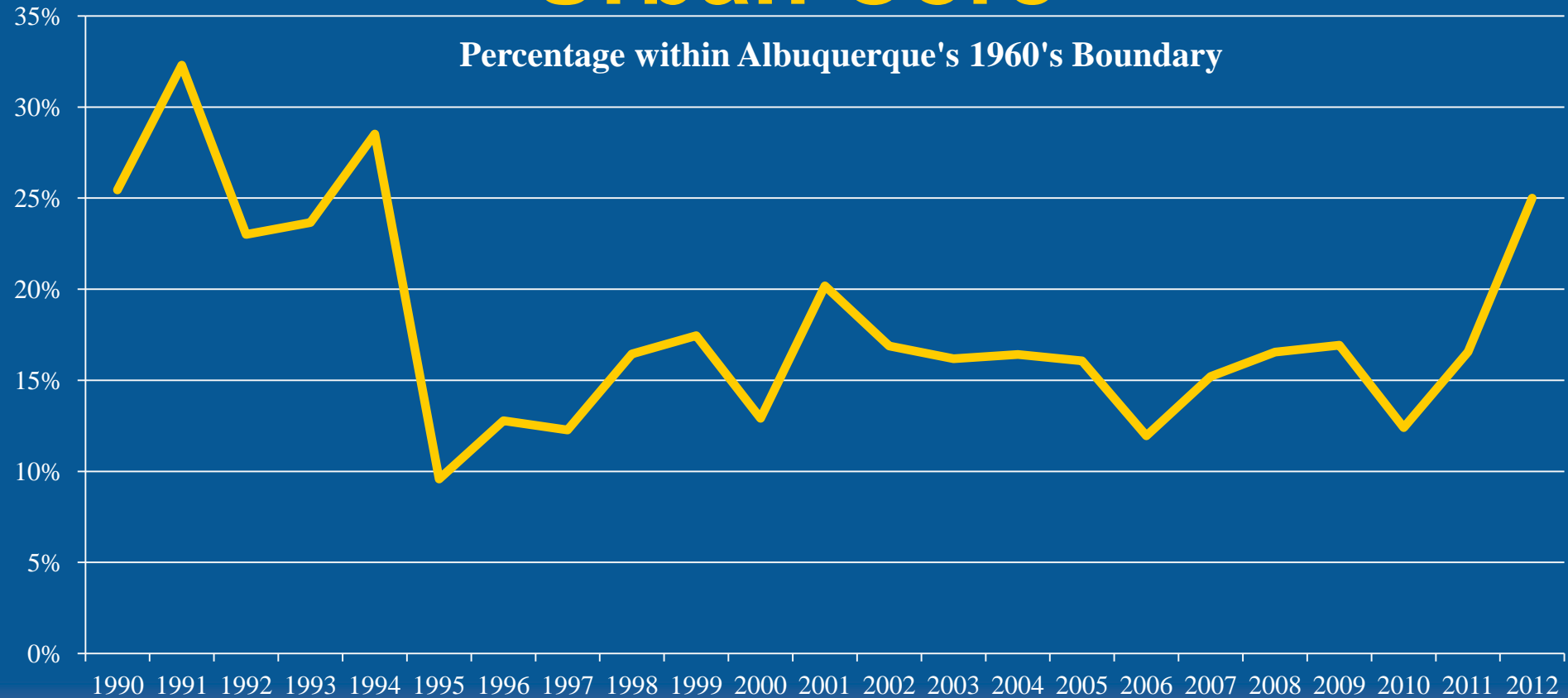


**Mid-Region Council of Governments**



# Commercial Permits in the “Urban Core”

Percentage within Albuquerque's 1960's Boundary



**Mid-Region Council of Governments**

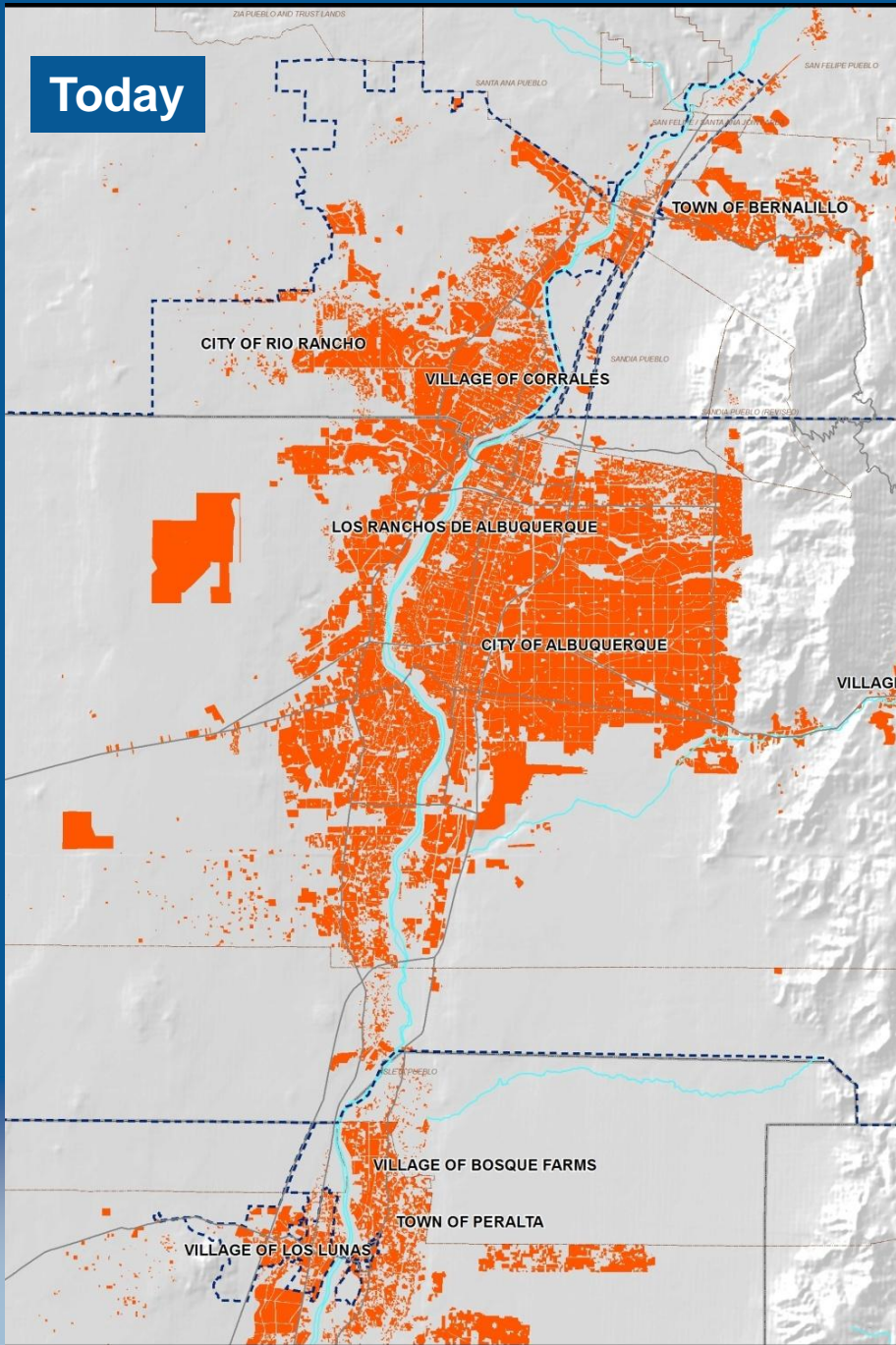
# Projected Land Use Pattern



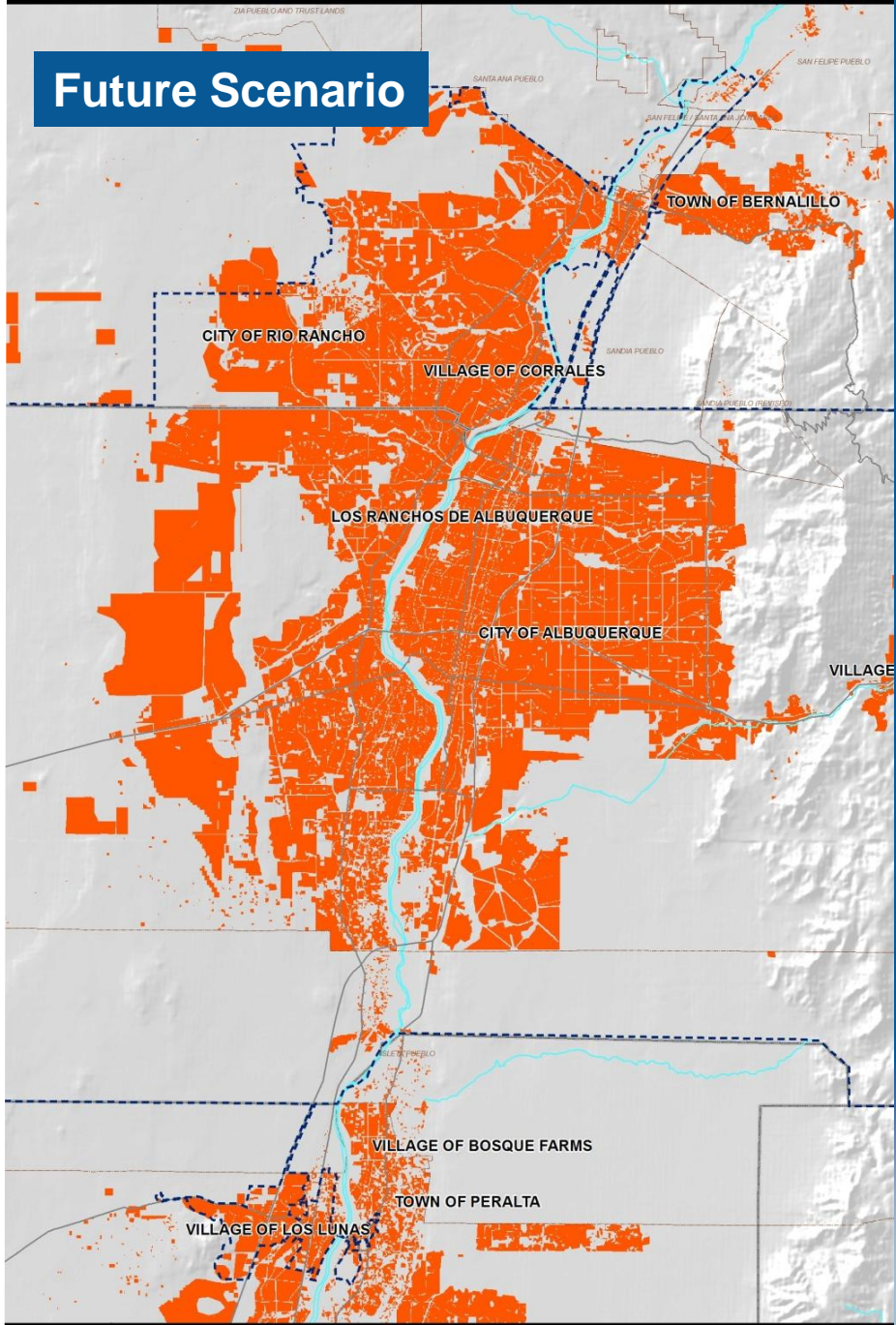
**Mid-Region Council of Governments**



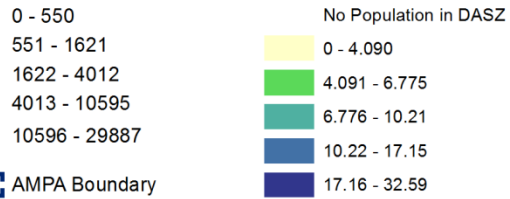
# Today




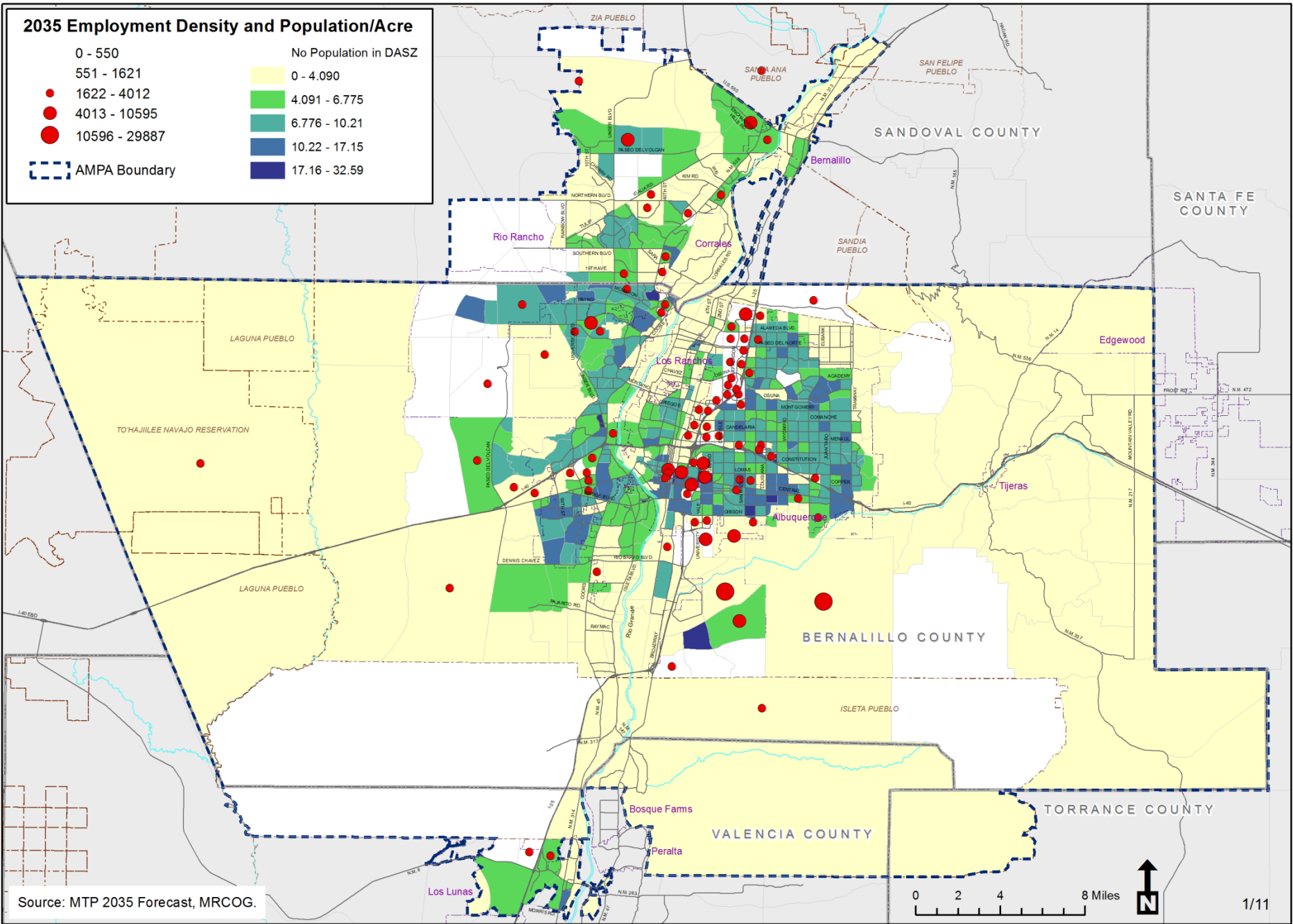
# Future Scenario



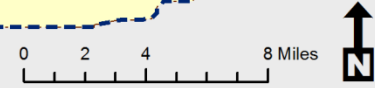
# 2035 Employment Density and Population/Acre



 AMPA Boundary



Source: MTP 2035 Forecast, MRCOG.



# The River Crossing Dilemma

- ◆ 1 of 2 jobs will locate west of the Rio Grande
- ◆ 3 of every 4 persons will locate west of the Rio Grande
- ◆ Sustained jobs - housing imbalance
  - 1.5 jobs for each home on the east side
  - 0.56 of a job for each home on the west side.



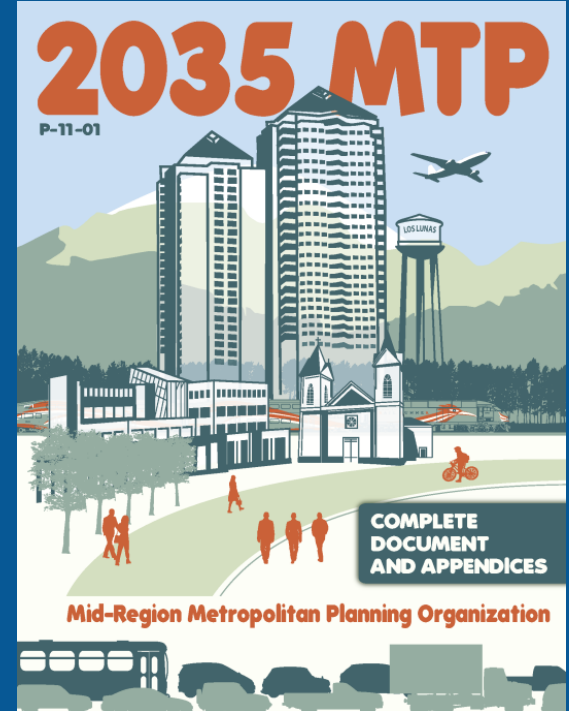
# The 2035 Metropolitan Transportation Plan



**Mid-Region Council of Governments**

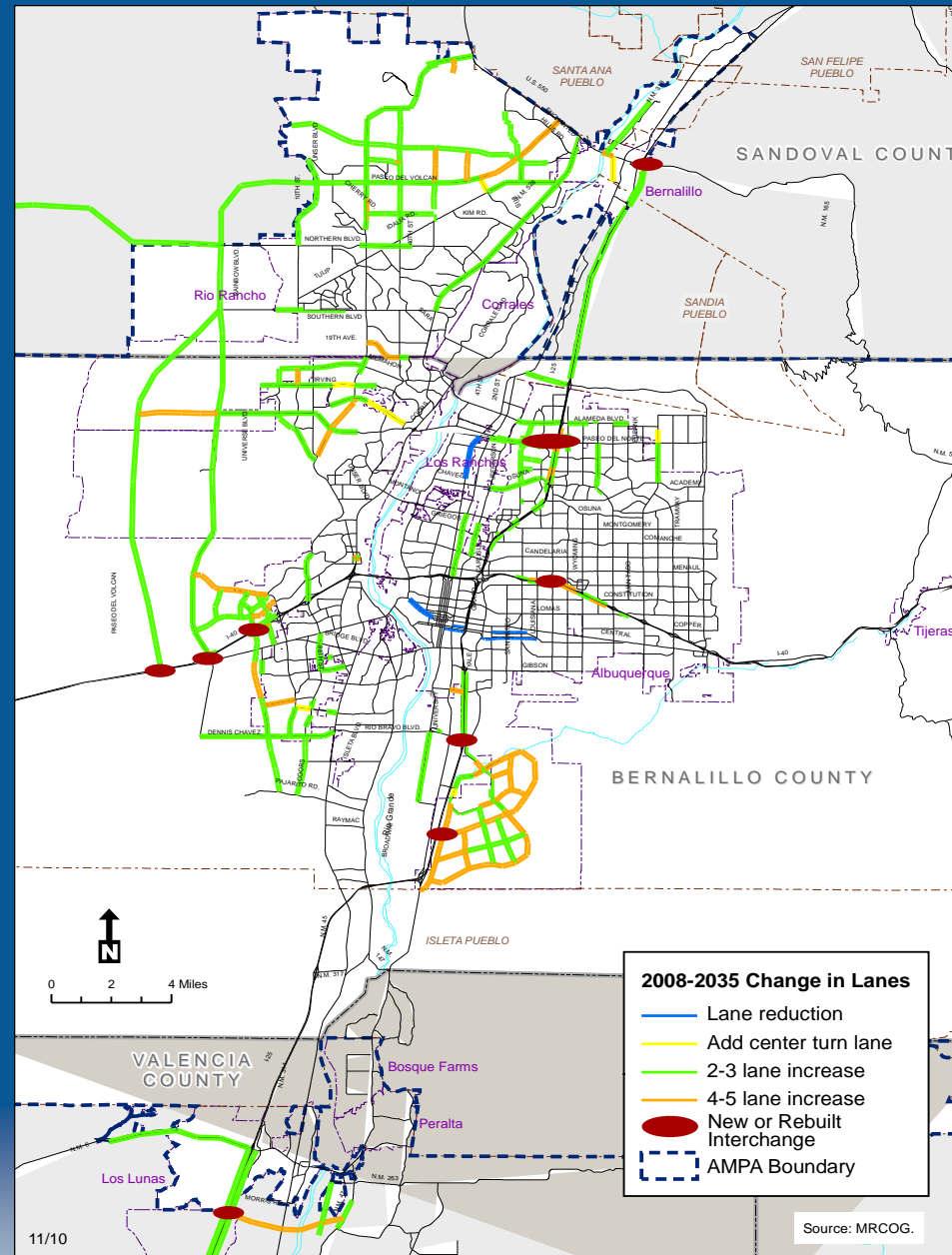
# What is an MTP?

- ◆ Anticipate future growth over 20+ years
- ◆ Consider impacts of growth on infrastructure
- ◆ Prioritize regional transportation needs
- ◆ Requires air quality conformity determination
- ◆ Fiscally constrained project list
- ◆ Collaborative, Comprehensive & Continuous



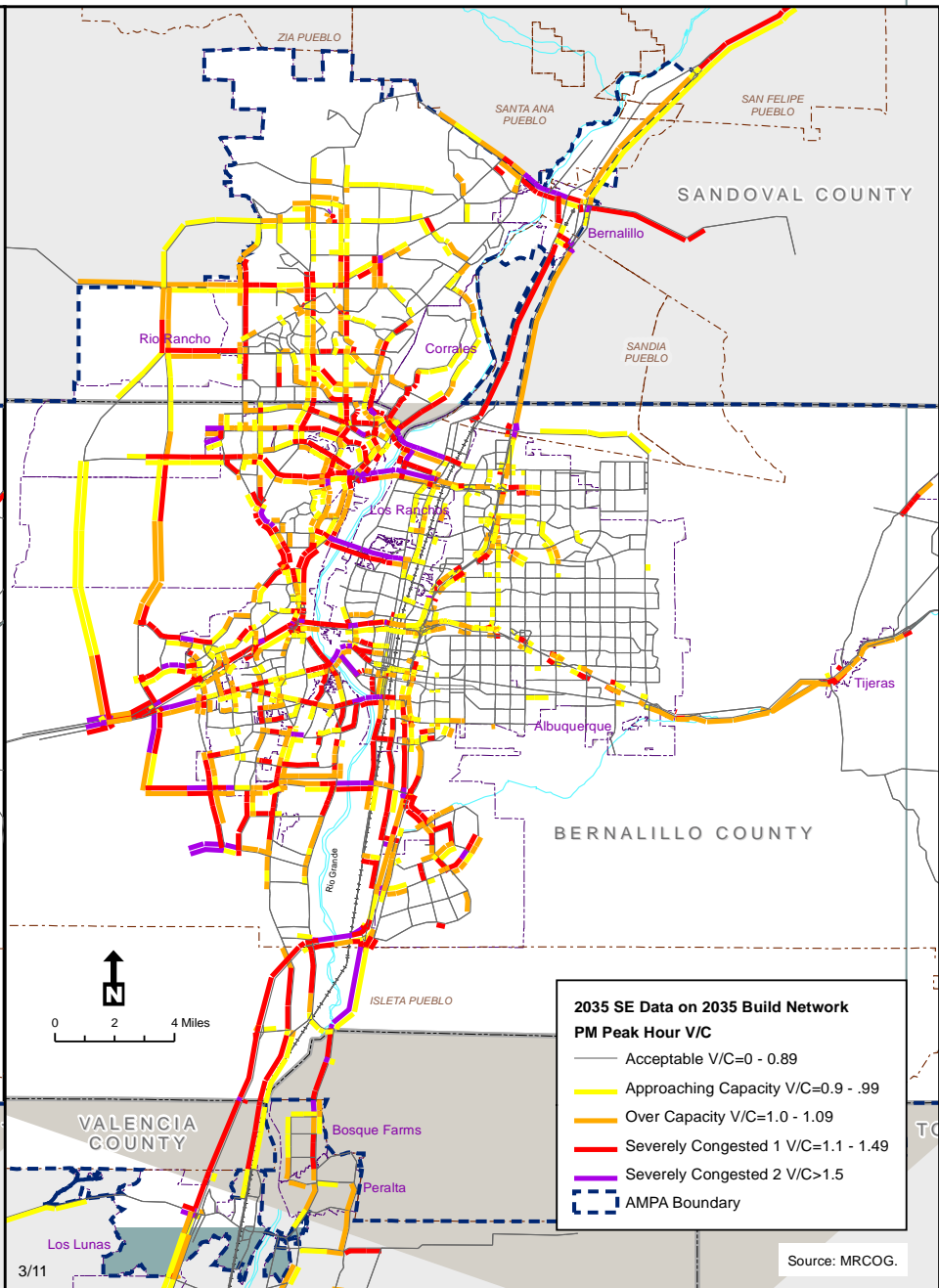
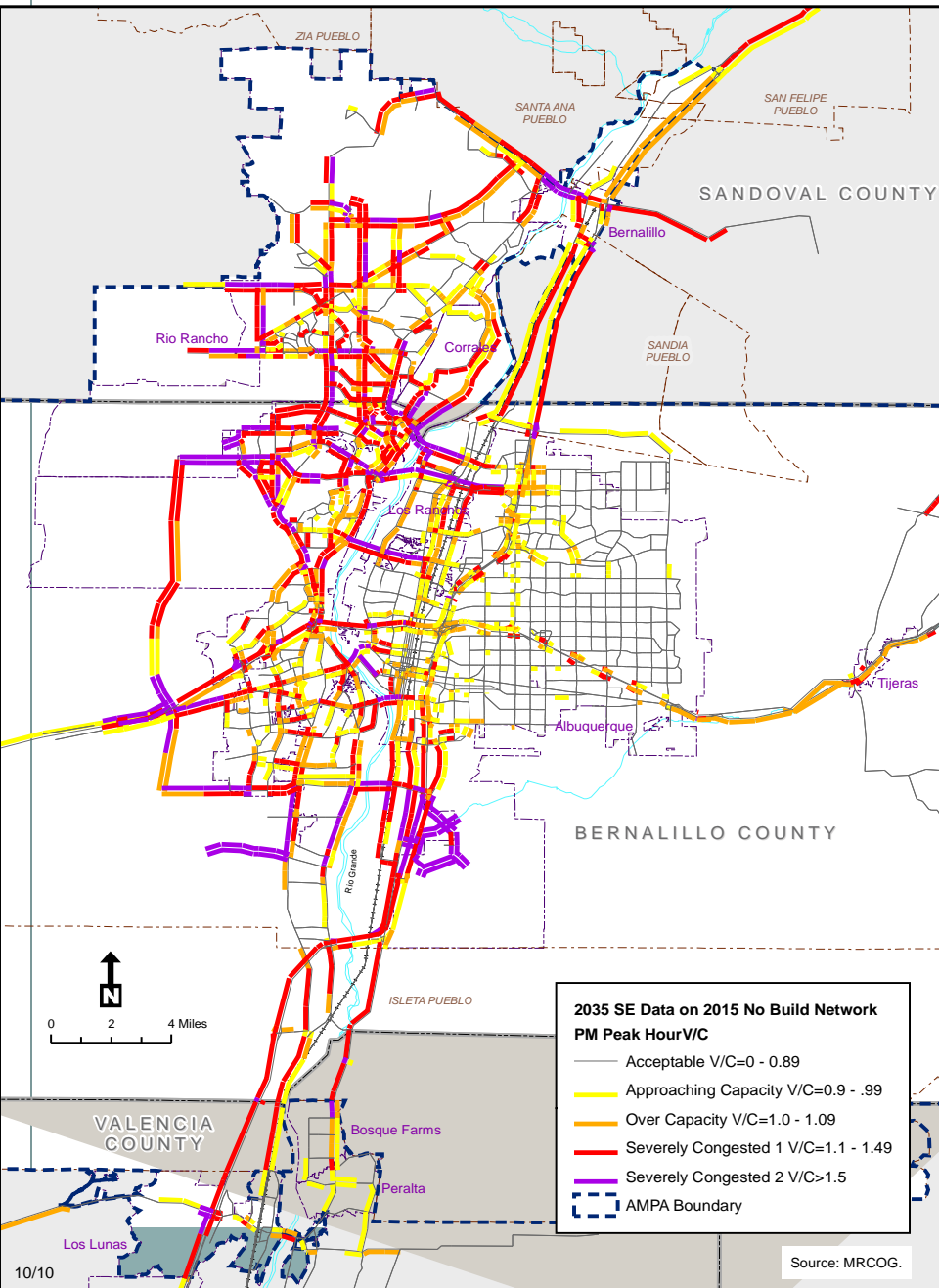
# Roadway Enhancements 2012-2035

- ◆ \$3 billion in increased capacity
- ◆ 600 new lane miles
  - ◆ North-south capacity
  - ◆ New network
- ◆ 9 new/reconstructed interchanges



# 2035 No-Build

# 2035 Build



# 2035 Summary

- ◆ **Miles on our roads:** *16 million to 24 million (+ 50%)*
- ◆ **Hours on our roads:** *400,000 to 740,000 (+ 80%)*
- ◆ **Average speeds:** *40 mph to 33 mph (- 17%)*
- ◆ **Trips across the river:** *492,000 to 960,000 (+94%)*

*• These are draft figures that reflect the new population projections released by UNM-GPS.*





# Key MTP Findings

- ◆ River crossing congestion / No new bridges
- ◆ Building our way out of congestion is not realistic
- ◆ There is no silver bullet. A variety of strategies will be necessary to tackle congestion.



# MTP Toolkit

- ◆ New Roads and Interchanges
- ◆ Operations & Systems Management
- ◆ Transit / Bus Rapid Transit
- ◆ Bicycle & Pedestrian Infrastructure
- ◆ Integrating Land Use & Transportation



# Air Quality Control Board

- ◆ Determine conformity
- ◆ Compliance with EPA guidelines for regulating mobile source emissions
- ◆ Limited Maintenance Plan for CO
- ◆ Recent years - Below National Ambient Air Quality Standards



# **Central New Mexico Scenario Planning Project:**

**An Interagency Transportation, Land Use, and  
Climate Change Initiative**



**Mid-Region Council of Governments**

# Climate Change Scenario Planning Project

- ◆ Only Metropolitan Planning Organization in the nation selected to participate
- ◆ Will focus on entire MRCOG region
- ◆ Confront unique challenges to region
  - ◆ Air quality/emissions
  - ◆ Water resource availability
  - ◆ Vulnerability to drought and wildfires
  - ◆ Growth pressures – land consumption, transportation challenges



# Project Highlights

- ◆ >\$500,000 in federal funds for technical support and consulting services (\$45,000 in staff support)
- ◆ Timeline: 18 months
- ◆ Climate Change Action Plan for Mid-Region (FHWA)
- ◆ Guidebook for other regions across the country (FHWA)
- ◆ Integrated in 2040 Metropolitan Transportation Plan (MRCOG)



**Mid-Region Council of Governments**

# What is Scenario Planning?

- ◆ Long-range planning approach that uses growth scenarios to consider different outcomes for the region
- ◆ Allows us to ask:
  - ◆ Where are we now?
  - ◆ Where do we want to be?
  - ◆ How do we get there?
- ◆ Help government agencies understand the costs and benefits of different development patterns
- ◆ Integrate land use and transportation planning to manage growth through effective long-term policy decisions



# Why Scenario Planning?

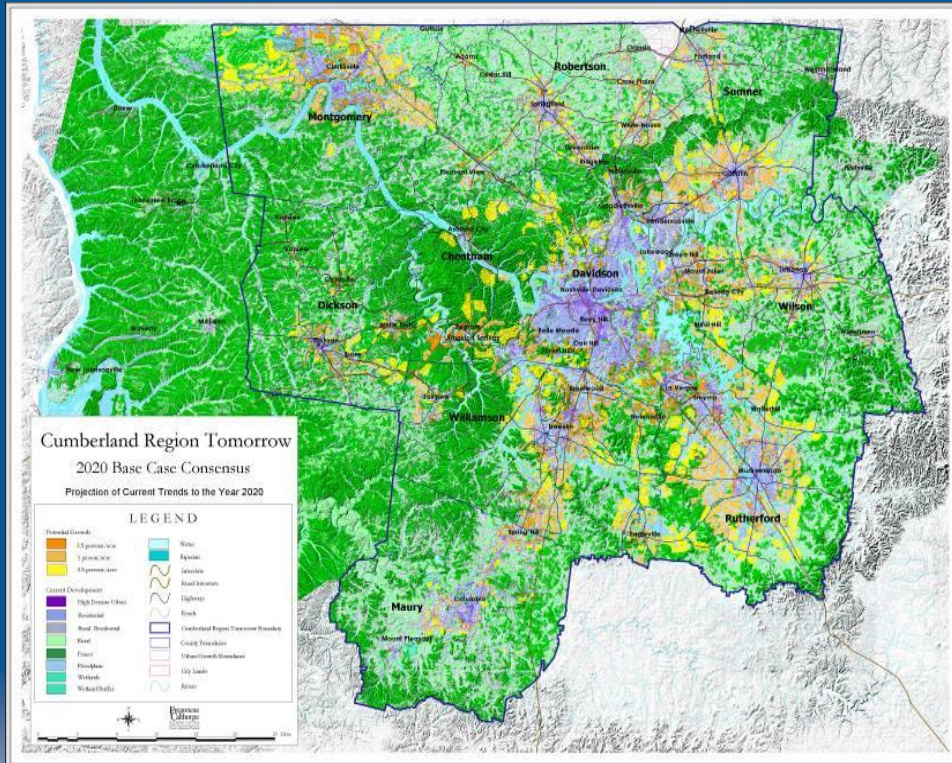
- ◆ **Proactive vs. reactive** approach to long-range planning
- ◆ No longer makes sense to predict one future and respond to it
- ◆ Standard or “business as usual approach”
  - findings from one MTP to next do not change
- ◆ Tools are improving – easier to measure and visualize different outcomes



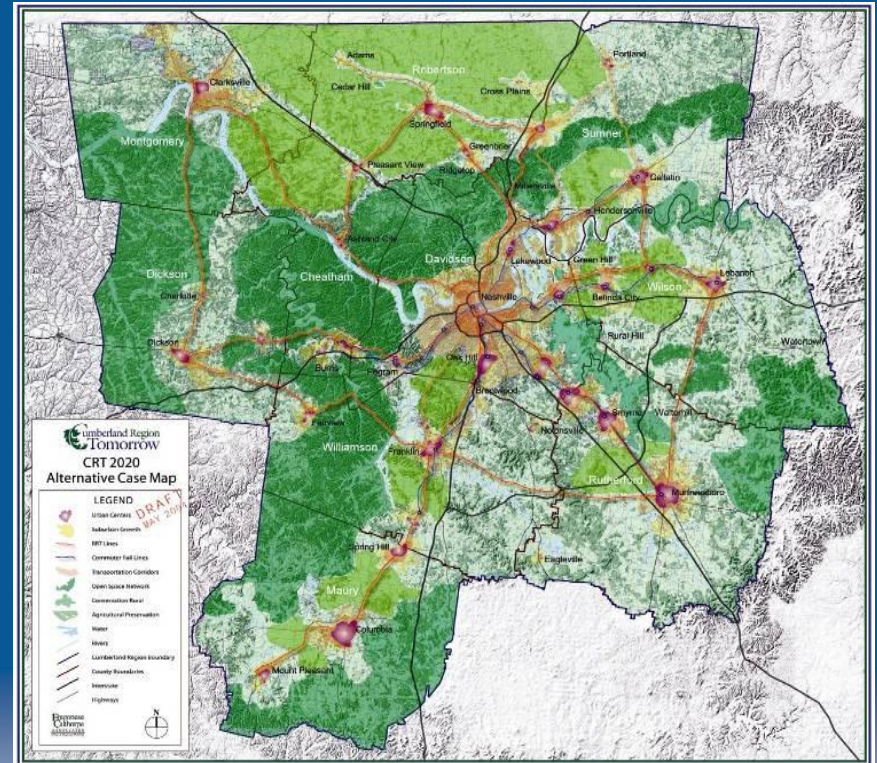


# Scenario Planning – Nashville, TN

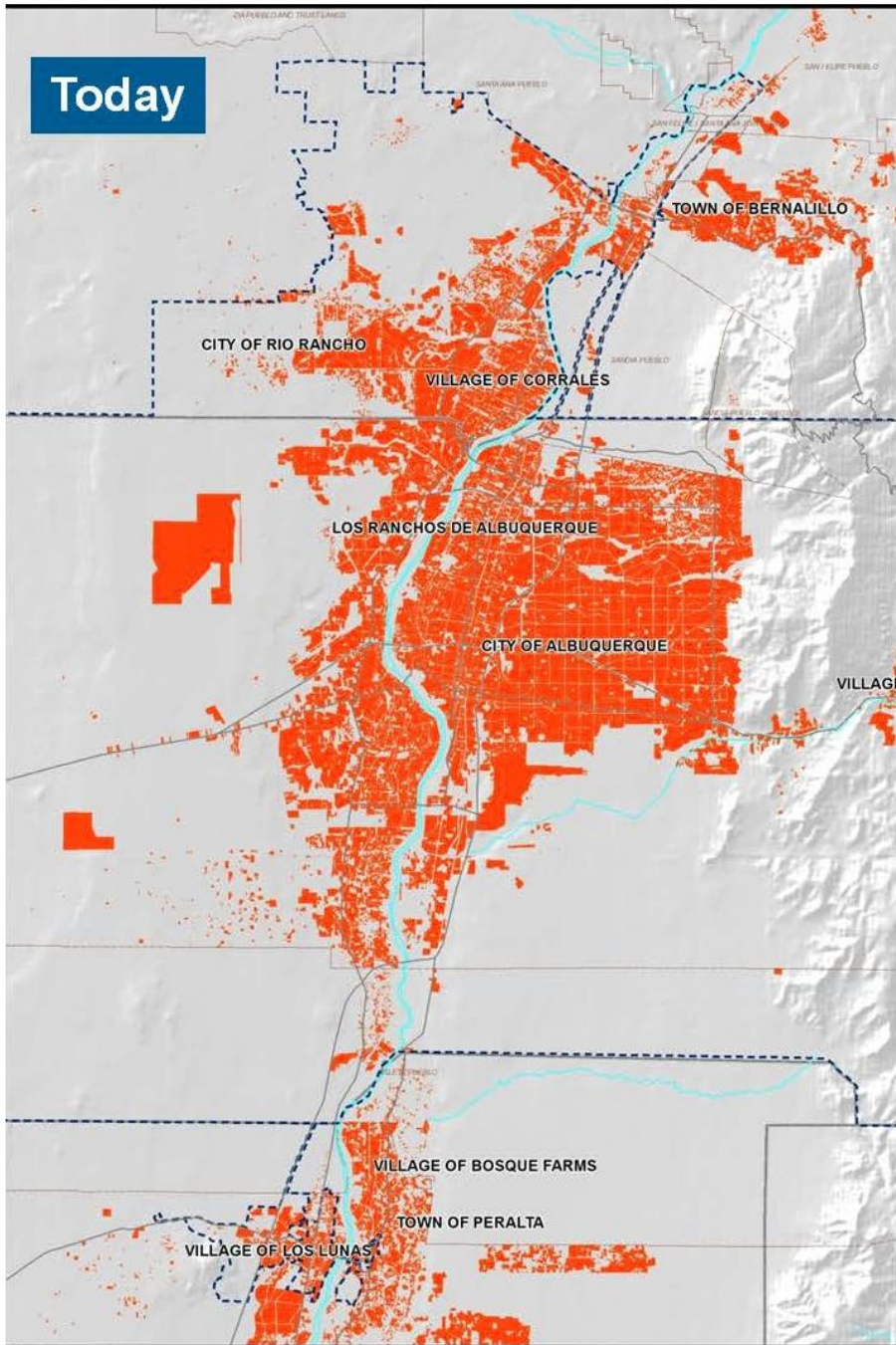
## TREND SCENARIO



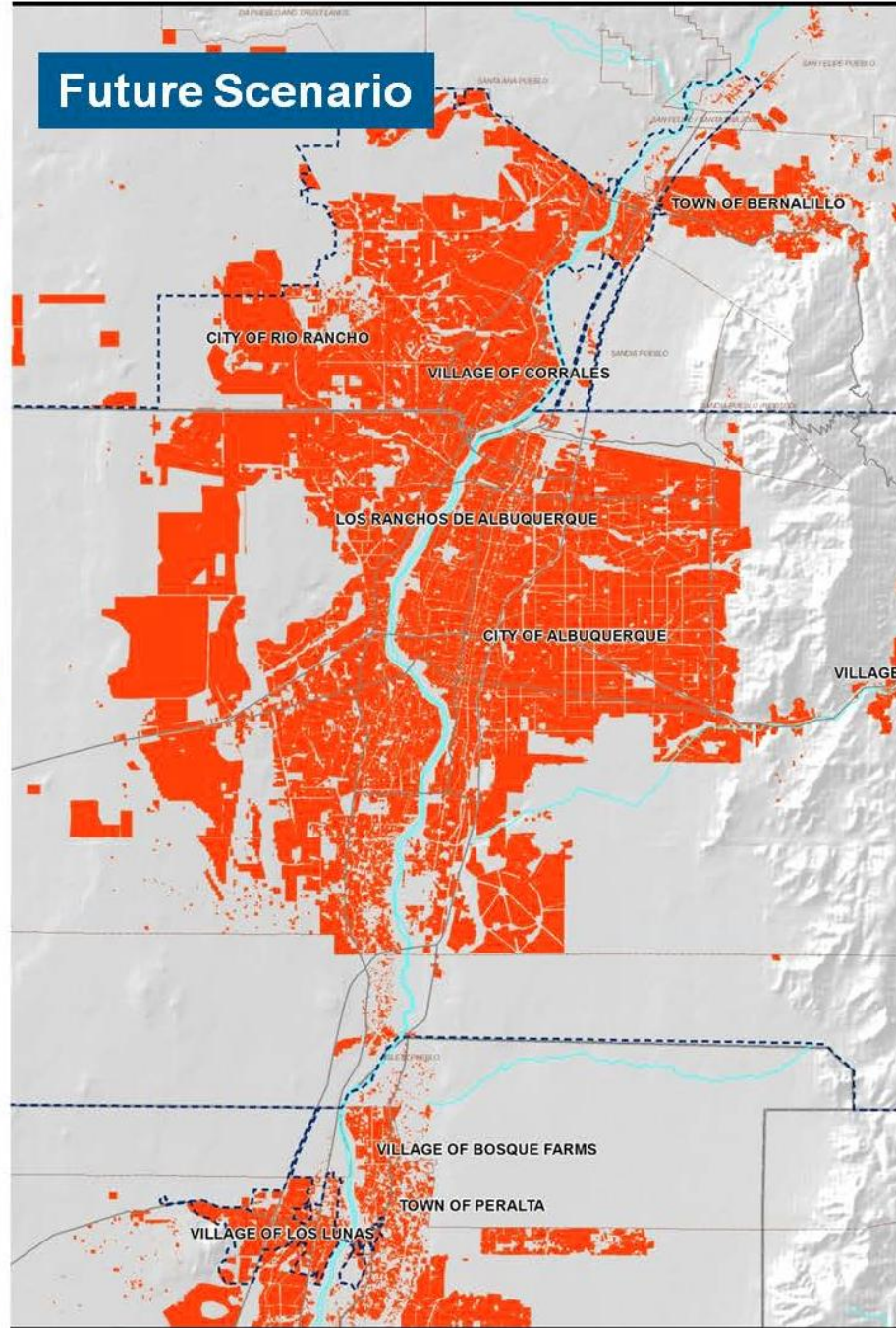
## ALTERNATIVE SCENARIO



# Today



# Future Scenario



# Project Goals

- ◆ **Advance climate analysis in scenario planning** — Analyze ability for expanded public transportation, employment and housing locations, and development patterns to reduce carbon pollution
- ◆ **Impact decision-making** — Incorporate results into local planning efforts and the 2040 MTP, which guides investment of federal, state, and local transportation funding.
- ◆ **Develop a transferrable process** — Be able to replicate the process and apply strategies to other region.
- ◆ **Build partnerships** — Strengthen relationships between federal, state, local and tribal governments around common goals.



# Project Components

- ◆ Gather federal and local partners
- ◆ Contract with planning consultant
- ◆ Scenario development and analysis
- ◆ Workshop – July 2014
- ◆ Analyze benefits associated with various growth scenarios
- ◆ Identify policy measures and action items
- ◆ Integrate results into planning documents and policies across region



# Contact Information

## **Kendra Watkins**

Socioeconomic Program Manager

Telephone –724-3601

Email – [kwatkins@mrcog-nm.gov](mailto:kwatkins@mrcog-nm.gov)

## **Aaron Sussman, AICP**

Transportation Planner

Telephone – 724-3631

Email – [asussman@mrcog-nm.gov](mailto:asussman@mrcog-nm.gov)



**Mid-Region Council of Governments**